

NOTICE OF MEETING

Meeting	Executive Member for Education Decision Day
Date and Time	Monday, 19th June, 2017 at 2.00 pm
Place	Mitchell Room, EII Court, The Castle, Winchester
Enquiries to	members.services@hants.gov.uk

John Coughlan CBE
Chief Executive
The Castle, Winchester SO23 8UJ

FILMING AND BROADCAST NOTIFICATION

This meeting may be recorded and broadcast live on the County Council's website. The meeting may also be recorded and broadcast by the press and members of the public – please see the Filming Protocol available on the County Council's website.

AGENDA

- 1. AMALGAMATION OF FORT HILL COMMUNITY SCHOOL AND CRANBOURNE BUSINESS AND ENTERPRISE COLLEGE, BASINGSTOKE, INCLUDING THE FORT HILL SPECIAL EDUCATIONAL NEEDS RESOURCED PROVISION** (Pages 3 - 18)

To consider a report of the Director of Children's Services regarding a school amalgamation in Basingstoke
- 2. 2017 POST 16 TRANSPORT POLICY STATEMENT** (Pages 19 - 70)

To consider a report of the Director of Children's Services regarding the 2017 Post-16 Transport Policy Statement
- 3. MILL CHASE SECONDARY SCHOOL - 6 FE NEW BUILD** (Pages 71 - 86)

To consider a report of the Director of Culture, Communities and Business Services regarding proposals for the relocation of a secondary school in Bordon at an estimated total cost of £29,990,000
- 4. PILGRIMS' CROSS (CHURCH OF ENGLAND) PRIMARY SCHOOL EXPANSION** (Pages 87 - 98)

To consider a report of the Director of Culture, Communities and Business Services regarding proposals for the permanent expansion of Pilgrims' Cross Church of England (Voluntary Aided) Primary School in Andover, at an estimated total cost of £1,456,000

5. ROWNHAMS ST. JOHN'S CHURCH OF ENGLAND PRIMARY SCHOOL EXPANSION (Pages 99 - 110)

To consider a report of the Director of Culture, Communities and Business Services regarding proposals for the permanent expansion of Rownhams St. John's Church of England Primary School, at an estimated total cost of £551,000

ABOUT THIS AGENDA:

On request, this agenda can be provided in alternative versions (such as large print, Braille or audio) and in alternative languages.

ABOUT THIS MEETING:

The press and public are welcome to attend the public sessions of the meeting. If you have any particular requirements, for example if you require wheelchair access, please contact members.services@hants.gov.uk for assistance.

County Councillors attending as appointed members of this Committee or by virtue of Standing Order 18.5; or with the concurrence of the Chairman in connection with their duties as members of the Council or as a local County Councillor qualify for travelling expenses.

HAMPSHIRE COUNTY COUNCIL

Decision Report

Decision Maker:	Executive Member for Education
Date:	19 June 2017
Title:	Amalgamation of Fort Hill Community School and Cranbourne Business and Enterprise College, Basingstoke including the Fort Hill Special Educational Needs resourced provision
Report From:	Director of Children's Services

Contact name: Brian Pope – Assistant Director, Children's Services

Tel: 02392 441471 **Email:** brian.pope@hants.gov.uk

1. Executive Summary

- 1.1. On 20 March 2017 the Executive Member for Education decided to publish a statutory Public Notice (Appendix 1) in accordance with sections 15 and 19 of the Education and Inspections Act 2006. The Notice set out the County Council's intention to discontinue Fort Hill Community School and resourced provision with effect from 31 August 2017, and to establish a new Specific Learning Difficulties resource provision at Cranbourne Business and Enterprise College (CBEC). The report for that decision set out the history and context behind the proposal alongside the findings of the initial consultation with parents, pupils and other interested parties. This further report sets out the context leading to that decision and reports back on the representations received during the statutory Public Notice period.
- 1.2. The report also sets out and comments upon the statutory guidance for decision makers on factors that need to be considered when deciding on proposals to close and expand schools.
- 1.3. The report recommends that Fort Hill Community School and resourced provision be closed with effect from 31 August 2017 and that Cranbourne Business and Enterprise College accommodate pupils from the school, with effect from 1 September 2017.

2. Contextual information

- 2.1. Parental preference for Fort Hill Community School has significantly reduced over the past five years with only 39 first preference applications received for admission to Year 7 in September 2017. On the national notification date, a total of 72 offers were made 26 of which were from parents that had not selected Fort Hill as their preference. Due to some parents declining their offer of a place and securing places elsewhere, only 44 offers remain. Pupil numbers have declined to such an extent that the

school's ability to provide a wide-ranging curriculum offer will become severely limited. The financial impact of reducing numbers also means the school will be faced with a substantial deficit budget from the beginning of the 2018/19 financial year.

- 2.2. Following discussion and a written request from the school's governing body the County Council undertook a public consultation between 19 January and 2 March 2017. The County Council's preferred option was to amalgamate Fort Hill Community School and Cranbourne Business and Enterprise College (CBEC), Basingstoke including the Fort Hill Special Educational Needs Specific Learning Difficulties (SpLD) resourced provision. The outcome of the consultation strongly favoured keeping Fort Hill School open. Following consideration of the responses received, including alternate proposals, the Executive Member for Education agreed to the publication of a Public Notice on the amalgamation.
- 2.3. GCSE results at Fort Hill over the past five years have been consistently poor, despite the best efforts of all those involved. The table below sets out the school's GCSE performance using the Government's preferred measure of the proportion of pupils being awarded five or more good GCSEs including English and mathematics at grades A* to C (%5A*-C English + maths) against the national figures for the four year period 2012 to 2015.

	%5A*-C(English + maths) Fort Hill	%5A*-C(English + maths) National
2015	39%	57%
2014	44%	57%
2013	42%	61%
2012	42%	59%

- 2.4. Pupils' progress has also been poor over this time. The preferred government measure used up to 2015 was based on the proportion of pupils that make three levels of progress in English over the five years of attending a school, and three levels of progress in mathematics. These figures are given below against the national averages.

3LP English Fort Hill		3 LP English National	3 LP mathematics Fort Hill	3 LP mathematics National
2015	61%	71%	46%	67%
2014	61%	72%	53%	66%
2013	51%	71%	66%	71%
2012	50%	68%	59%	69%

- 2.5. In 2016 the Government's preferred measures of secondary school performance changed. Schools are now judged against the proportion of pupils reaching "the basics" (an A* to C grade in both English and mathematics), the proportion of pupils being awarded the English baccalaureate (%EBacc – the equivalent of 5A*-C GCSEs but in a tightly defined range of subjects), Attainment 8 (A8 – pupils' average performance

- across eight tightly defined subjects) and Progress 8 (P8 – a measure of pupils' progress in these eight subject areas).
- 2.6. Fort Hill has performed poorly across these measures. 47% of pupils were awarded the basics against 63% nationally, 9% achieved the EBacc against 25% nationally, A8 was 44 versus 50 nationally, P8 was – 0.55. This means that pupils at the school made half a GCSE grade less progress on average than pupils nationally in the same subjects.
 - 2.7. In 2016, the definition of the floor standard was changed so that it is now solely based on the P8 progress measure. Fort Hill falls below this new standard.
 - 2.8. The authority has to evaluate the impact of the number of children in the catchment area of Fort Hill who have chosen to attend the school, against the numbers who have not and go elsewhere to be educated. This must be considered alongside the school's performance over recent years and the significant work undertaken over this time to raise educational standards which, have not been realised. Since the consultation was launched to amalgamate Fort Hill Community School with CBEC on 19 January 2017 as described below, 138 children across Years 7 -10 have left Fort Hill Community School, having applied for and secured places at other local schools. Of those, 49 have started at CBEC. The total number of children currently on roll at Fort Hill Community School is 325.
 - 2.9. GCSE results in the maintained schools close to Fort Hill are all higher than in Fort Hill. Progress rates are better. Pupils would do better if they attended other local secondary schools.
 - 2.10. In general, larger secondary schools are more successful than smaller schools. This is because they have more resources available to them and it is consequently easier to build up a critical mass of good teaching within the school. Setting up one larger school would be to the benefit of pupils and staff in both schools. Not only would it enable a much wider and varied curriculum offer, it would also provide a far stronger platform to support continuing professional development for staff. Larger schools can offer a wider choice of curricular pathways and therefore all students, including those that are more vulnerable, can access more bespoke educational opportunities.
 - 2.11. The County Council believes that amalgamating Fort Hill with CBEC on the CBEC site offers the best potential for success for both schools.
 - 2.12. Alternative options or other proposals as to how the required improvement of Fort Hill could be achieved were invited as part of the consultation process. Having reviewed these options it was concluded that amalgamation of the two schools on the CBEC site provides the best opportunity for school improvement.

3. Statutory guidance for decision makers regarding school closure and amalgamations

- 3.1. The Department for Education has issued statutory guidance for decision makers on factors that need to be considered when deciding on proposals to amalgamate schools. There are a number of factors to be considered:

- Any proposal that is 'related' to another proposal must be considered together, do the published notices comply with statutory requirements?
- That an appropriate, fair and open local consultation and representation period (to the Public Notice) has been carried out and full consideration has been given to all the responses received.
- Consideration is given to the quality and diversity of schools in the relevant area and whether the proposal will meet or affect needs of parents, raise local standards and narrow attainment gaps
- Whether there are any sex, race or disability discrimination issues that arise from the changes being proposed.
- The impact on community cohesion.
- That accessibility planning has been properly taken into account and the proposed changes should not adversely impact on disadvantaged groups.
- The impact on special educational needs provision.
- There is sufficient capacity to accommodate displaced pupils from a school closure.
- That guidance on schools causing concern (intervention in failing, underperforming and coasting schools) has been followed.

4. Representations to the Public Notice

- 4.1. The Public Notice was published on 24 March for a period of four weeks; the closing date for comments was 21 April 2017.
- 4.2. Nine representations were received during the Public Notice consultation period. These have been made available to the Executive Member for Education and all Hampshire County Councillors.
- 4.3. In addition a number of representations were received between the Executive Member for Education decision on 20 March and the publication of the Public Notice on 24 March. The comments made during this period are summarised below and for the sake of consistency and fairness have been considered within this report;
 - That the number of first preferences used as the comparison for demand did not reflect the actual year 7 offers made which were higher.
 - That safeguarding issues at Cranbourne and distance between the schools and the difficulties this will cause parents were not considered sufficiently.
 - Concern about what will happen to the Fort Hill site if it left empty.
 - Additional support should be provided to Fort Hill in order for them to improve, with greater support being secured from the local community.
 - The negative impact on pupils from the disruption this proposal will cause.

- Concern over the safety of the walking routes between the two schools was not fully taken into account.
 - That parent and others views were not taken into account during the first consultation exercise.
 - The consideration of other options including using space in alternative schools to Cranbourne was not fully considered.
- 4.4. The majority of representations received sought clarification on a range of subjects related to the proposal and these are listed below;
- No mention was made of the request for the Fort Hill site to remain available for year 10 and 11 pupils from September 2017.
 - Arrangements for some form of pupil transport between the schools.
 - What arrangements are there for those pupils who must walk the distance between the schools? There is significant concern amongst families of the safety of the walking routes between the schools.
 - Is there any arrangement to support families in buying new school uniforms?
 - What will be the new catchment area for the school and what strategy will be put in place to support pupils travelling to the school?
 - Concerns about the impact on pupils in the resourced provision and for those pupils with more general special educational needs.
 - That the consultation was not undertaken correctly and not all views were represented in the minutes of the public meetings, and that online consultation responses were not acknowledged.
 - That the consultation following the publication of the Public Notice was poorly advertised.
 - Nothing was mentioned in the report to the Executive Member for Education about free schools.
 - Why was CBEC chosen for amalgamation compared to other schools in the local area?
 - Manydown is due to be built shortly so shouldn't Fort Hill stay open to meet the need for additional school places?
 - Who benefits from the closure as it's not the local community?
 - Who supports those children affected by the closure?
 - What will happen with current year 10 pupils at Fort Hill?
 - Concern that the County Council will not allow the Fort Hill site to remain open for year 10 and 11 pupils.
 - CBEC has low pupil numbers and is unpopular so why is the County Council trying to save Cranbourne and being anti Fort Hill?
 - Fort Hill, which requires improvement, is being closed and the County Council expects its pupils to attend a school that is rated inadequate by OFSTED.

5. Responses to representations made

- 5.1 The majority of representations made during the Public Notice period mirrored those raised during the initial consultation process and were addressed in the report submitted to the Executive Member for Education on 20 March 2017. These issues are addressed in section 6 detailing the information as a response to the statutory guidance for decision makers.

6. Responses to statutory guidance for decision makers regarding school amalgamation

- 6.1 The relevant factors to be considered in relation to this decision are detailed below, which address equally the representations made during the Public Notice consultation period.

Related proposals

- 6.2 The proposal on the amalgamation of Fort Hill Community School and Cranbourne Business and Enterprise College included the related proposal to establish resourced provision for up to 16 pupils with a Specific Learning Difficulty (SpLD) at CBEC with effect from 1 September 2017. The detail in relation to this related proposal forms part of this report.

Consideration of consultation and representation period

- 6.3 Details on the outcome of the initial public consultation were detailed in the report to the Executive Member for Education of 20 March 2017. This consultation provided a range of opportunities for consultees to submit their responses which were fully considered as part of the above mentioned report. The Public Notice was published and displayed as required in the relevant statutory guidance. Representations made during the Public Notice period are summarised and addressed in this report and representations have been made available as required to all County Councillors.

Education standards and diversity of provision

- 6.4 Any proposal relating to a school closure should be based upon the fact that the closure will contribute to raising local standards of education and new alternate provision will lead to improved attainment for pupils. GCSE results at Fort Hill over the past five years have been consistently poor and the school's performance has been below the national headline figures year on year over this period. Additionally, pupils' progress over this time has been poor and again below the national average.
- 6.5 Over the five year period from 2012 to 2016 the standards at CBEC, as indicated by the government's attainment and progress measures, have been consistently above those at Fort Hill apart from in 2012. CBEC received an inadequate Ofsted judgement in December 2015 – this was as a result of an issue related to a safeguarding procedure, not educational performance. This was immediately addressed by the school and subsequently checked by education advisers who confirmed the issue had been effectively dealt with.
- 6.6 The authority has to evaluate the impact of the number of children in the catchment area of Fort Hill who have chosen to attend the school, against the large majority who have not and go elsewhere to be educated. This has

to be considered against the track record of performance and the significant steps that have been taken to improve the school to little avail.

- 6.7 The increase in pupil numbers through the amalgamation of Fort Hill and CBEC would increase CBEC's budget and therefore the breadth of the educational offer. In general, larger schools are more successful than smaller schools. This is because they have more resources available to them and it is consequently easier to build up a critical mass of good teaching within the school. So setting up one larger school would be in the interests of pupils currently in both schools.
- 6.8 The County Council believes that the amalgamation of Fort Hill with CBEC on the CBEC site offers the best potential for creating high quality educational provision with better outcomes for students.

Equal opportunity issues

- 6.9 Consideration must be given as to whether there are any sex, race or disability discrimination issues that arise from the changes being proposed. Whilst it is proposed that Fort Hill Community School is closed, the Local Authority will make available the Fort Hill site to the governing body of CBEC so that they can continue to offer education on the Fort Hill site for year 10 and 11 pupils from September 2017 should they wish to do so. Support with travel between the Fort Hill and CBEC sites at the beginning and end of the school day will be offered to current Fort Hill pupils in years 8 and 9 from September 2017 for a fixed period of two years. This offer would be extended to pupils in years 10 and 11 if at anytime during this period a decision is taken by the governing body to cease the offer of education on the Fort Hill site. This support would be available for any pupil on roll of Fort Hill at the time of the Executive Member's Decision day on 20 March 2017.
- 6.10 The policies of the County Council and CBEC in relation to equal opportunities and eliminating discrimination will continue to apply should the amalgamation be approved.
- 6.11 County Council officers will work with the headteacher and governing body of CBEC to assess the opportunities that exist to provide financial support to those families in most need with regard to any additional costs incurred from having to buy a new school uniform. The arrangements will need to be clarified by the governing body should the decision be made to proceed with the amalgamation.

Community cohesion

- 6.12 The significant decline in pupil numbers at Fort Hill over the past five years and linked impact on the school's financial position leading to a reduced curriculum offer has brought the school's future viability into question. Should the amalgamation proposal be approved the County Council would be keen, in conjunction with Basingstoke and Deane Borough Council and the local community, to look at how the site could be used to support future public infrastructure opportunities.

Travel and accessibility

- 6.13 Support to travel between the Fort Hill and CBEC sites at the beginning and end of the school day would be offered to Fort Hill pupils in years 8 and 9

from September 2017 for a period of two years. This offer would be extended to pupils in years 10 and 11 if at anytime during this period a decision is taken by the governing body to cease the offer of education on the Fort Hill site. In order to access this offer all families would need to apply to the County Council in due course. This support would be available for any pupil on roll of Fort Hill at the time of the Executive Member's Decision day on 20 March 2017.

6.14 Should the proposal be approved the County Council's School Travel Plan team would work with the school community to identify sustainable methods of travel to school. Work has been undertaken to assess exiting walking routes and further work would include but not limited to:

- Assessing the existing transport infrastructure
- Mapping of infrastructure, walking/cycling zones, bus routes, and postcode/mode of travel (pupils and where available, staff). Other mapping where relevant e.g. to indicate dispersal of parking with the inclusion of an additional entrance or plan showing suggested measures/improvements.
- Consultation with relevant stakeholders (parents, staff, pupils, residents, governors and others the schools wish to engage with)
- Development of a Travel Action plan consisting of appropriate aims and objectives, 'SMART' targets, suitable measures (soft and hard), possible actions which are allocated to suggested roles/bodies and within approximate timescales.
- Monitoring strategy with appropriate timescales to undertake a full survey and review the travel plan based on the new school population and community.

Changes to special educational needs provision

6.15 Fort Hill Community School has a resourced provision for children with Specific Learning Difficulties (SpLD). The proposal is to re-establish this provision on the CBEC site. The importance of this provision is recognised and, if the school is amalgamated with CBEC, pupils placed in the resourced provision would continue to receive the same level of support that is currently available to them, including access to a suitably qualified teacher and other support as required within a mainstream setting to meet their individual needs. Support would continue to be provided to reflect the provision as specified within the pupils' Education, Health and Care Plans, and/or their individual education plans.

Sufficient capacity exists in the local area to accommodate displaced pupils

6.16 Fort Hill School has a capacity of 731 places and Cranbourne a capacity of 1,182 places. The number on roll of both schools at January 2017 census was 1,100. Cranbourne prior to 2011 had a PAN of 260 (currently 180) and a capacity of 1,300 places. Based on current numbers on roll the total of pupils from both schools can be accommodated on the Cranbourne site. This number could not be accommodated within the available buildings and space on the Fort Hill site.

6.17 With regard to the response made during the Public Notice period relating to the new housing proposed at Manydown, should this receive planning permission, it is not expected that new homes will be occupied until 2018/19, at the earliest. New primary provision is unlikely to be provided until 2020/21 and the requirement for any new secondary school places is not anticipated until the mid 2020s. The intention is to provide new school places to meet the demand from the Manydown development when needed. Keeping Fort Hill open beyond September this year in expectation of future demand from Manydown will cause significant financial issues due to the large funding deficit that will exist and does nothing to address the quality of education currently on offer to pupils. Therefore, keeping the school open because of future development on Manydown is not a viable option.

That guidance on schools causing concern (intervention in failing, underperforming and coasting schools) has been followed

6.18 Since 2012 Fort Hill Community School and local authority have worked closely together and considerable activity has taken place with the aim of bringing about improvement in standards, progress and the overall quality of the school. As well as using other sources of school support, this has included work from local authority subject inspectors to support and challenge the leadership and management, in particular subject areas in the school; support and help to develop teaching; support to develop the subject knowledge of teachers who are working outside their subject specialisms and support and challenge for the school's senior leadership.

6.19 Despite this work, standards have remained stubbornly low, as have rates of progress. A situation further compounded by the levels of staff turnover during this period. In the professional judgement of Hampshire's Inspection and Advisory Service, if Ofsted was to inspect the school currently, it is highly likely to be rated as 'requires improvement' or 'inadequate'.

6.20 The Local Authority has followed the relevant guidance regarding intervention and feels amalgamation with CBEC presents the best opportunity to improve educational outcomes for pupils currently at Fort Hill.

6.21 Free school proposals are only considered where there is a need for a new school in an area to meet a clearly identified basic need pressure or, widen parental choice. In this instance this is not the case, therefore the development of a free school on the Fort Hill site is not required.

7 Consultation and Equalities

7.1 The County Council has undertaken the consultation and the publication of the Public Notice process in line with all relevant Departments for Education statutory guidance. Relevant documents were also published in the Hampshire Independent, on the County Councils website and at the school's.

7.2 Details of the consultation process and responses were reported to the Executive Member for Education on 20 March 2017 and this report details those representations received during the publication of the Public Notice.

7.3 An Equality Impact Assessment (EIA) has been undertaken and it is acknowledged there is likely to be an impact in relation to age, disability and

poverty. For age this could be an impact due to the additional distance pupils will have to travel to attend CBEC; for disability it relates to the closure of the SpLD resourced provision at Fort Hill and establishment of this provision at CBEC and for poverty in relation to possible additional travel costs and that of providing a new school uniform.

- 7.4 It is felt that suitable mitigation will be put in place to lessen the impacts. To support pupils who may have a longer journey to school it is proposed that support is offered, to those pupils currently on the roll of Fort Hill Community School in years 7 and 8 who will transfer to CBEC in September 2017, with travel between the two schools at the beginning and end of the school day. This support is to be offered for a maximum of 2 years from 1 September 2017. This offer would be extended to pupils in years 10 and 11 if at anytime during this period a decision is taken by the governing body to cease the offer of education on the Fort Hill site. This support would be available for any pupil on roll of Fort Hill at the time of the Executive Member's Decision day on 20 March 2017. The Local Authority will make available the Fort Hill site to the governing body of CBEC so that they can continue to offer education on the Fort Hill site for year 10 and 11 pupils from September 2017 should they wish to do so.
- 7.5 The importance of the resourced provision is recognised and, if the school is amalgamated with CBEC, pupils placed in the resourced provision would continue to receive the same level of support that is currently available to them. This would include access to a suitably qualified teacher and other support as required within a mainstream setting to meet their individual needs. Support would continue to be provided to reflect the provision as specified within the pupils' Education, Health and Care Plans, and/or their individual education plans. The SpLD resourced provision will be provided at CBEC. Provisional planning has commenced to support the smooth transition of students should a decision be taken to amalgamate the two schools.
- 7.6 County Council officers will work with the headteacher and governing body of CBEC to assess the opportunities that exist to provide financial support to those families in most need with regard to any additional costs incurred from having to buy a new school uniform. The arrangements will need to be clarified by the governing body should the decision be made to proceed with the amalgamation.

8 Financial impact

- 8.1 Fort Hill Community School ended 31 March 2017 with a carry forward surplus balance of £278,306, a reduction of £161,158 from the previous year. The school's current three year financial plan projects a deficit of £1.7m in three years based on current pupil numbers.
- 8.2 As outlined in the previous report considered by the Executive Member for Education in March, a significant deficit is still forecast. With a continuing decline in pupil numbers forecast, there will be further impact on the level of funding the school will receive.
- 8.3 In the event of Fort Hill Community School closing and amalgamating with CBEC, both schools would receive a pro-rata budget share for the period 1

April to 31 August 2017 for five months of funding. From 1 September 2017, CBEC would be issued with a revised budget share that incorporates the pupils from Fort Hill School at point of closure. A significant financial impact would be the loss of the Fort Hill School's lump sum, which is £160,000 per school for 2017/18. However, as a protection for amalgamating schools and to acknowledge the loss of the lump sum, CBEC would continue to receive two lump sums for the remainder of 2017/18 and for 2018/19 would receive equivalent to 85% of the two combined lump sums.

- 8.4 While the amalgamated school continues to operate across the two school sites, the school will be eligible for additional split site funding as detailed within the Hampshire School Funding Policy Pack.
- 8.5 Additional items incurred by the re-organisation would be funded via the re-organisation fund from within the growth fund, details of which can also be found within the Policy Pack.

9 Personnel implications

- 9.1 Should a decision be taken to close Fort Hill and amalgamate it with CBEC the County Council will work with all affected staff, their professional associations and any future academy sponsor to ensure the interests of all staff are fully considered.
- 9.2 Early provisional engagement with staff at Fort Hill and CBEC has commenced in parallel to the statutory consultation period. This is required to ensure that should a decision be taken to amalgamate the two schools the required staffing actions can be concluded in line with the proposals.

10 Admissions

- 10.1 In the event that a decision is taken to close Fort Hill Community School, any families holding an offer of a place at Fort Hill for Year 7 in September 2017 will be notified that their offer becomes an offer of a place at CBEC. Parents who do not wish to send their child to CBEC may apply to other schools if they wish and their preference will be met wherever possible, depending on availability of places. The Admissions Team can advise which schools have availability and assist with the application process. Parents who are unable to gain a place at their preferred school because it is full can add their child's name to the waiting list. They also have the right of appeal to an independent appeal panel. The same rights apply to parents of current Fort Hill pupils seeking to secure a place elsewhere.
- 10.2 The admission arrangements for Cranbourne for both 2017/18 and 2018/19 have already been determined. If the decision is taken to amalgamate Fort Hill with CBEC, the local authority will seek approval from the Schools Adjudicator to vary the admission arrangements for CBEC to include an extension of the catchment area to incorporate the existing Fort Hill catchment area and the addition of Castle Hill Primary School, Chiltern Primary School and Winklebury Junior School as named linked schools.

- 10.3 On conversion to Academy status, the Academy would adopt the admission arrangements determined by the local authority (varied or otherwise) for 2017/18 and 2018/19. The Academy would determine its own admission arrangements for 2019/20 onwards.

11 Future direction

- 11.1 The Local Authority has met the statutory guidance to enable a decision to be made regarding the amalgamation of Fort Hill Community School and Cranbourne Business and Enterprise College. In addition that resourced provision be created at Cranbourne for up to 16 pupils with a Specific Learning Difficulty (SpLD).
- 11.2 The Public Notice resulted in nine representations, which have been considered by the Executive Member for Education and made available to all Hampshire County Councillors and are summarised in this report.
- 11.3 There are significant challenges facing Fort Hill relating to poor educational performance and low pupil numbers, which together contribute to the fact that significant change is needed. The amalgamation of Fort Hill and CBEC present the best opportunity for providing sufficient, quality secondary school places enabling one shared vision for pupils in the area with the aim of providing consistent, high aspirations and expectations and a drive for excellence.

12 Recommendations

- 12.1 It is recommended that approval be given to the proposal published by the Local Authority, in accordance with sections 15 and 19 of the Education and Inspections Act and the School Organisation (Prescribed Alterations to Maintained Schools)(England) Regulations 2013 to
- (a) Discontinue Fort Hill Community School (including resourced provision), Kenilworth Road, Basingstoke RG23 8JQ from 31 August 2017.**
 - (b) Establish resourced provision for up to 16 pupils with a Specific Learning Difficulty (SpLD) at Cranbourne Business and Enterprise College (Community School), with effect from 1 September 2017.**
- 12.2 That the Local Authority make available the Fort Hill site to the governing body of CBEC so that they can continue to offer education on the Fort Hill site for year 10 and 11 pupils from September 2017 should they wish to do so.
- 12.3 That support is offered, to those pupils currently on the roll of Fort Hill Community School in years 7 and 8 who will transfer to CBEC in September 2017, with travel between the two schools at the beginning and end of the school day. This support to be offered for a maximum of two years from 1 September 2017. This offer would be extended to pupils in years 10 and 11 if at anytime during this period a decision is taken by the governing body to cease the offer of education on the Fort Hill site. This support would be available for any pupil on roll of Fort Hill at the time of the Executive Member's Decision day on 20 March 2017.

CORPORATE OR LEGAL INFORMATION:

Links to the Corporate Strategy

Hampshire safer and more secure for all:	No
Maximising well-being:	yes
Enhancing our quality of place:	No
OR	
This proposal does not link to the Corporate Strategy but, nevertheless, requires a decision because:	

Other Significant Links

Links to previous Member decisions:	
<u>Title</u> Amalgamation of Fort Hill Community School and Cranbourne Business and Enterprise College, Basingstoke including the Fort Hill Special Educational Needs resourced provision	<u>Date</u> 20/3/17
Direct links to specific legislation or Government Directives	
<u>Title</u> Education and Inspections Act School Organisation-Maintained Schools – Guidance for decision makers	<u>Date</u> 8/11/2016 April 2016

Section 100 D - Local Government Act 1972 - background documents

The following documents discuss facts or matters on which this report, or an important part of it, is based and have been relied upon to a material extent in the preparation of this report. (NB: the list excludes published works and any documents which disclose exempt or confidential information as defined in the Act.)

<u>Document</u>	<u>Location</u>
Representations to the Public Notice	Children’s Services Department, Hampshire County Council, Winchester

IMPACT ASSESSMENTS:

1. Equality Duty

12.4 The County Council has a duty under Section 149 of the Equality Act 2010 ('the Act') to have due regard in the exercise of its functions to the need to:

- Eliminate discrimination, harassment and victimisation and any other conduct prohibited under the Act;
- Advance equality of opportunity between persons who share a relevant protected characteristic (age, disability, gender reassignment, pregnancy and maternity, race, religion or belief, gender and sexual orientation) and those who do not share it;
- Foster good relations between persons who share a relevant protected characteristic and persons who do not share it.

Due regard in this context involves having due regard in particular to:

12.4.1 The need to remove or minimise disadvantages suffered by persons sharing a relevant characteristic connected to that characteristic;

12.4.2 Take steps to meet the needs of persons sharing a relevant protected characteristic different from the needs of persons who do not share it;

12.4.3 Encourage persons sharing a relevant protected characteristic to participate in public life or in any other activity which participation by such persons is disproportionately low.

12.5 Equalities Impact Assessment:

An Equality Impact Assessment (EIA) has been undertaken and it is acknowledged there is likely to be an impact in relation to age, disability and poverty. For age this could be an impact due to the additional distance pupils will have to travel to attend CBEC; for disability it relates to the closure of the SpLD resourced provision at Fort Hill and establishment of this provision at CBEC and for poverty in relation to possible additional travel costs and that of providing a new uniform.

It is felt that suitable mitigation will be put in place to lessen the impacts. To support pupils who may have a longer journey to school it is proposed that support is offered, to those pupils currently on the roll of Fort Hill Community School in years 7 and 8 who will transfer to CBEC in September 2017, with travel between the two schools at the beginning and end of the school day. This support to be offered for a maximum of 2 years from 1 September 2017. In addition, the Local Authority will work with the governing body of CBEC to support the continued provision of education on the Fort Hill site for year's 10 and 11 pupils from September 2017.

The importance of the resourced provision is recognised and, if the school is amalgamated with CBEC, pupils placed in the resourced provision would continue to receive the same level of support that is currently available to them, including access to a suitably qualified teacher and other support as

required within a mainstream setting to meet their individual needs. Support would continue to be provided to reflect the provision as specified within the pupils' Education, Health and Care Plans, and/or their individual education plans. The SpLD resourced provision will be provided at CBEC.

The Local Authority will work with the governing on a strategy to support eligible parents with any additional school uniform costs.

13 Impact on Crime and Disorder:

13.1 The recommendations will have no impact on crime and disorder.

14 Climate Change:

14.1.1 How does what is being proposed impact on our carbon footprint / energy consumption?

No impact has been identified

14.1.2 How does what is being proposed consider the need to adapt to climate change, and be resilient to its longer term impacts?

No specific measures have been identified



AMALGAMATION OF FORT HILL COMMUNITY SCHOOL AND CRANBOURNE BUSINESS AND ENTERPRISE COLLEGE, BASINGSTOKE

1. **Notice is given** in accordance with S15 of the Education and Inspections Act 2006 and the School Organisation (Establishment and Discontinuance of Schools) Regulations 2013 that Hampshire County Council, The Castle, Winchester, Hampshire SO23 8UG intends to discontinue Fort Hill Community School (including resourced provision), Kenilworth Road, Basingstoke RG23 8JQ from 31 August 2017.
2. **Notice is also given** in accordance with S19 Education and Inspections Act 2006 and the School Organisation (Prescribed Alterations to Maintained Schools) (England) Regulations 2013 that Hampshire County Council intends to establish resourced provision for up to 16 pupils with a Specific Learning Difficulty (SpLD) at Cranbourne Business and Enterprise College (Community School), Wessex Close, Basingstoke RG21 3NP. It is proposed that the resourced provision will open on 1 September 2017.
3. The closure of Fort Hill Community School is being proposed due to reducing pupil numbers. Places will be available for all pupils affected by the closure of Fort Hill school (including those with special educational needs) at Cranbourne Business and Enterprise College.
4. Transport will be provided for any pupils who qualify under the authority's published policy:
<https://www.hants.gov.uk/educationandlearning/schooltransport>
5. This Notice is an extract from the complete proposal which contains the reason for the decision. A copy of the complete proposal can be viewed on the following website <http://www3.hants.gov.uk/publicnotices.htm> or obtained from Glenn Parkinson, Strategic Development Office, Children's Services Department, The Castle, Winchester, Hampshire SO23 8UG (email: strategicplanningunit@hants.gov.uk)
6. Within four weeks from the date of publication of these proposals, any person may object to or make comments on the proposals by sending them to Glenn Parkinson, Strategic Development Office, Children's Services Department, The Castle, Winchester, Hampshire SO23 8UG (email: strategicplanningunit@hants.gov.uk)

John Coughlan, Chief Executive, Hampshire County Council
Publication date: 24th March 2017

HAMPSHIRE COUNTY COUNCIL

Decision Report

Decision Maker:	Executive Member for Education
Date:	19 June 2017
Title:	2017 Post-16 Transport Policy Statement
Report From:	Director of Children's Services

Contact name: Martin Goff

Tel: 01962 846185

Email: martin.goff@hants.gov.uk

1. Executive Summary

1.1. The purpose of this paper is to inform the Executive Member on the consultation carried out regarding the 2017 Post-16 Transport Policy Statement, taking comments from schools, colleges/post-16 providers, and young people aged 16-19 into account while considering the content of the statement. The paper also presents the detail of the proposed 2017 Post-16 Transport Policy Statement.

2. Contextual information

2.1. Statutory guidance from the Department for Education on post-16 transport to education and training requires local authorities to prepare and publish an annual transport policy statement each year specifying the arrangements for the provision of transport for persons of sixth form age in education or training.

2.2. Hampshire County Council and its post-16 providers are committed to ensuring transport is available to enable students to access education and training as set out in the policy statement. The support is provided either by the County Council or post-16 providers.

2.3. There is no automatic entitlement to free home to school or college transport once a student is over 16. The authority has considered its resources and the travel to college opportunities for students. Students can attend a college of choice and, if needed, apply to their college's student support for assistance.

2.4. The County Council does offer, under discretionary powers, a transport service, on receipt of an annual parental contribution, to enable 16+ students with a statutory assessment of their Learning Difficulty or Disability to access a place that is the closest suitable provision for their needs. Currently this discretionary provision costs approximately £1.2m

2.5. Students from low-income families, in care, or care leavers may be eligible for a yearly bursary through the 16 to 19 Bursary Fund from the Education Funding Agency. This fund replaced the Education Maintenance Allowance in September

2012 and offers students from the most vulnerable families greater financial support towards the cost of staying in further education. Students and their families apply for the bursary directly through their chosen college/post-16 provider.

- 2.6. Statutory guidance clarifies the duty to consult with stakeholders in developing the statement before publication.
- 2.7. Hampshire colleges and post-16 providers provide travel information for inclusion in the statement; listing transport and travel schemes offered, any college owned bus services, local public transport links and discounted or subsidised season tickets available to students.

3. Outline of proposals being consulted upon

- 3.1. That the Executive Member approve the proposed 2017 Post-16 Transport Policy Statement with minor amendments. The statement has undergone the required consultation process inviting comment from stakeholders on the following:
 - Any comment on the 2016 Post-16 Transport Policy Statement
 - Any post-16 travel issues in the stakeholder's respective area

4. 2017 Transport policy statement for students in further education aged 16–18 and continuing students aged 19 (Annexe A)

- 4.1. In February 2017 approval was given to increase the annual contribution paid by families of children with special educational needs and disabilities towards the cost of transport from £555 to £570 for 2017/2018. This is payable by one lump sum or by instalments.
- 4.2. Colleges and post-16 providers were contacted in January 2017 and then at regular intervals to request travel information for inclusion in the statement appendices. Colleges from whom no timely response was received were advised that information previously given in the 2016 Post-16 Transport Policy Statement would be published in lieu of more recent information.
- 4.3. The Home to School Transport – Review/Appeals Process, included as an Appendix within the Post-16 Transport Policy Statement, has been amended to direct appellants to the County Council's Home to School Transport Policy. The process by which Home to School Transport appeals are handled for a young person attending a Post-16 provision matches that detailed in this Policy.

5. Consultation on 2017 Post-16 Transport Policy Statement

- 5.1. The public consultation on the 2017 Post-16 Transport Policy Statement ran from 31 January 2017 to 21 April 2017. Responses were invited by completing a dedicated online survey.
- 5.2. There were 158 responses to the consultation, all of which have been taken into consideration when compiling the statement for publication. Approximately 55% of responses came from young people in post-16 education or due to start in September 2017. The remainder of responses came from parents, schools,

colleges, education providers, governors, and a Parish/Town Council councillor or representative.

- 5.3. 17% of responses to the consultation commented on the high cost of transport to post-16 providers. Colleges work closely with local transport providers to negotiate favourable, discounted and often subsidised season tickets. Many providers also offer financial assistance towards the cost of transport to those meeting eligibility criteria. Students from low-income families, in care, or care leavers can also apply through their chosen college/post-16 provider for additional financial support through the 16 to 19 Bursary Fund. The travel information for each post-16 provider is detailed in the appendices of the Post-16 Transport Policy Statement.
- 5.4. 23% of responses to the consultation came from residents of the Fleet area commenting on the lack of post-16 provision available in the area and that young people had no option but to travel to college and incur costs in doing so. There are several areas in the County where young people are required to travel by car or public transport to their nearest post-16 provision as it is not within walking distance. As mentioned above, post-16 providers work closely with local transport providers and offer discounted season tickets and financial assistance for students towards the cost of travel. Many providers also offer their own dedicated bus services, often subsidised to reduce the cost to students, for students who are required to travel long distances or who live in an area with poor public transport links.
- 5.5. 10% of responses to the consultation commented that as children are now required to remain in education or training until the age of 18 the Local Authority should provide assistance with transport. Recent legislation change required young people of 6th form age to remain in education or employment with training. However, there was no change in transport legislation that sets a duty to provide free transport only to pupils of statutory school age. The legislation requires only that the authority publishes an annual post-16 transport policy statement.
- 5.6. 5% of responses to the consultation commented that it was unfair for the Local Authority to request a contribution from families to provide assistance for those young people with special educational needs or a disability, and that this assistance should be provided free of charge in line with other services provided to a specialist or resourced provision. There is no automatic entitlement to free home to school or college transport once a student is over 16. The authority has considered its resources and the travel to college opportunities for students. The cost and mechanical process of transporting young people with special educational needs is greater and more complex. HCC recognises that families may need a transport service to ensure that 16+ SEN students can access a place that is suitable for their needs and so do offer, under discretionary powers, a transport service that requires an annual parental contribution.
- 5.7. 10% of responses to the consultation commented that the statement was fair and offered assistance with travel to those who needed it most.

6. Impact Issues

- 6.1. No adverse impact in regard to race, culture, gender, or disability arising from this report has been identified. However, to ensure that the 2017 Post-16 Transport Policy Statement allows for the best interests of all young people aged 16-19 to be properly taken into account when applying the published policy an equality impact assessment has been undertaken and is attached to this paper.
- <http://documents.hants.gov.uk/equality-impact-assessments/Post16TransportPolicyStatement2017.pdf>

7. Recommendations

- 7.1. That the Executive Lead Member for Children's Services:
- Notes the process that has been followed (as set out in the report) and the responses to the public consultation that have been received (as summarised in the report).
 - Acknowledges the material changes from the 2016 Post-16 Transport Policy Statement, which are as follows:
 - (i) Revision of the annual contribution to £570 per academic year.
 - (ii) Revision of statement appendices providing up to date travel information for colleges and post-16 providers
 - (iii) Revision of the review/appeals process
 - Approves the 2017 Post-16 Transport Policy Statement set out in Annexe A.

CORPORATE OR LEGAL INFORMATION:

Links to the Corporate Strategy

Hampshire safer and more secure for all:	yes
Corporate Improvement plan link number (if appropriate):	
Maximising well-being:	yes
Corporate Improvement plan link number (if appropriate):	
Enhancing our quality of place:	yes
Corporate Improvement plan link number (if appropriate):	

Section 100 D – Local Government Act 1972 – background documents

The following documents discuss facts or matters on which this report, or an important part of it, is based and have been relied upon to a material extent in the preparation of this report. (NB: the list excludes published works and any documents which disclose exempt or confidential information as defined in the Act.)

DocumentLocation

None

IMPACT ASSESSMENTS:

1. Equality Duty

1.1. The County Council has a duty under Section 149 of the Equality Act 2010 ('the Act') to have due regard in the exercise of its functions to the need to:

- Eliminate discrimination, harassment and victimisation and any other conduct prohibited under the Act;
- Advance equality of opportunity between persons who share a relevant protected characteristic (age, disability, gender reassignment, pregnancy and maternity, race, religion or belief, gender and sexual orientation) and those who do not share it;
- Foster good relations between persons who share a relevant protected characteristic and persons who do not share it.

Due regard in this context involves having due regard in particular to:

- a) The need to remove or minimise disadvantages suffered by persons sharing a relevant characteristic connected to that characteristic;
- b) Take steps to meet the needs of persons sharing a relevant protected characteristic different from the needs of persons who do not share it;
- c) Encourage persons sharing a relevant protected characteristic to participate in public life or in any other activity which participation by such persons is disproportionately low.

1.2. Equalities Impact Assessment:

To ensure that the 2017 Post-16 Transport Policy Statement allows for the best interests of all young people aged 16-19 to be properly taken into account when applying the published policy an equality impact assessment has been undertaken.

1. Impact on Crime and Disorder:

2.1. None identified

2. Climate Change:

- a) How does what is being proposed impact on our carbon footprint / energy consumption?
- b) How does what is being proposed consider the need to adapt to climate change, and be resilient to its longer term impacts?
None identified

Transport policy statements for students in further education aged 16–18 and continuing students aged 19.

Name of LEA : Hampshire

Department Responsible: Education

Hampshire County Council

2017/18 Transport policy statement for students in further education aged 16-19, continuing students and young people aged 19-24 with learning disabilities

1. Commitment

Hampshire County Council and its post 16 providers are committed to ensuring transport is available to enable students to access education and training as set out in this policy statement. Support is provided either by the County Council or post 16 providers. This policy statement applies for 2017/18 only and sets out the support available.

There is no automatic entitlement to free home to school or college transport once a student is over 16. The authority has considered its resources and the travel to college opportunities for students. Students can attend a college of choice and, if needed apply to their college's student support for assistance. The cost and mechanical process of transporting young people with special educational needs is greater and more complex. HCC recognises that families may need a transport service to ensure that 16+ SEN students can access a place that is suitable for their needs and so do offer, under discretionary powers, a transport service that requires an annual parental contribution.

2. General transport available

There are a number of public transport service providers in Hampshire. Colleges and schools in Hampshire have their own transport arrangements but the situation does vary. Students should check with their establishment about the transport arrangements and ticketing prices that can apply to both bus and train travel. The following link provides the information supplied by colleges and sixth form establishments.

[College and School Details](#)

Other transport support

Post 16 education providers and other agencies provide support with transport in certain cases, for example:

- Cycle schemes
- Care to Learn - <https://www.gov.uk/care-to-learn/overview>
- Wheels to Work - <http://www3.hants.gov.uk/wheels-to-work>
- Brain in Hand - <http://braininhand.co.uk/>

3. Qualification for support from Hampshire County Council for students attending colleges and schools with sixth forms (including academies)

The local authority assists with travel expenses for post-16 students with special educational needs or a disability. Transport assistance will be provided in line with the criteria below; a contribution (normally from parents) of £570 per annum, towards the cost of this transport will be required. Transport will normally only be offered if the student has a statement of SEN or Education, Health and Care Plan (EHCP) or if the student has a disability which means he/she requires transport arrangements to be provided as evidenced by a doctor's certificate.

Age: The student must be under 19 years of age on 1 September prior to the start of the course.

Income: There are no low income requirements. When the student's parents are in receipt of Income Support, income-based Jobseekers Allowance, income-related Employment and Support Allowance, support under Part VI of the Immigration and Asylum Act 1999, the guaranteed element of State Pension Credit, Child Tax Credit (provided you're not also entitled to Working Tax Credit and have an annual gross income of no more than £16,190), Working Tax Credit run-on - paid for 4 weeks after you stop qualifying for Working Tax Credit, or Universal Credit the charge will be waived. Families in receipt of free school meals (due to low income) are not required to pay the contribution.

Minimum distance: The journey from home to school/college must be more than three miles, measured by the nearest available walking route.

Entitled within walking distance? Transport may be provided within the walking distance where this is recommended and takes into account, amongst other things, the following factors:

- The student's ability to walk
- The student's need to be accompanied by an adult (usually parent or guardian); and
 - i) The parent's or guardian's ability to walk
 - ii) The need for primary age siblings to be taken to other schools where the timing of the school day or the direction of the other school(s) prevent the parent or guardian from accompanying

Which college or school? Travel assistance will be given to the nearest college considered to be the most suitable placement for the student and which offers a course or programme which is designed specifically to meet the special needs of the student concerned. If the course or programme is not specifically designed to meet the needs of those with SEN, travel assistance will be given to the nearest college offering an appropriate course. A course is deemed appropriate where it enables a student to meet his or her career objectives.

Travel assistance will be given where the entitled student continues to attend the special school or school with a sixth form named in his or her statement of SEN or EHCP.

Pick-up and drop-off points: Where the distance between a pick-up or drop-off point and home or college is less than 1.5 miles, the County Council will not normally provide transport for that part of the journey. However, transport may be provided for students within these distances where this is recommended following an assessment of their individual needs. The criteria used to determine entitlement within walking distance apply in these circumstances.

Journeys to and from other destinations: Transport is not offered to or from points other than the college and home.

Waiting Time: where appropriate the transport arrangement may include a waiting time at the start or end of the day.

4. Post 16 training providers and apprenticeships

The same qualifications as set out in paragraph 3 apply for students attending post 16 training providers. Students in apprenticeships with employed status do not qualify for any assistance with travel costs.

5. Qualification for support from colleges and schools with sixth forms including academies

In addition to the support available from Hampshire County Council, post 16 providers may also provide financial support towards transport costs for certain students such as young parents, those from low income families, those at risk of being Not in Education, Employment or Training (NEETs). This is determined by the provider and is often based on how they have locally determined to use 'hardship' funds.

Please follow the link below to information provided by post-16 providers regarding transport services.

College and School Details

6. Assistance with transport for students over the age of 19 with learning difficulties or disabilities

Such students will qualify for transport assistance subject to the following conditions:

- The student being subject to a statement of special educational needs at the end of year 11 which outlines the educational provision to be made at age 16+ or the student is subject to an Education, Health and Care Plan.
- The journey being over three miles unless
 - the student is unable to walk that distance (and evidence is provided to support that difficulty)
 - the student needs to be accompanied by an adult
 - there is a primary aged child who the parent needs to accompany to school

Assistance with transport for students with learning difficulties or disabilities will be reviewed at the age of 19. It will then continue to be provided either up until the age of 24 or until the student completes the course whichever is the earliest.

Students will be provided with assistance to the nearest provider considered to be the most suitable placement for the student and where the course or programme has been designed to meet the needs of the student. If the course or programme is not specifically designed travel assistance will be given to the nearest provider offering an appropriate course. A course is deemed appropriate where it enables the student to meet his or her career objectives.

Some students with complex and/or severe needs are placed in a residential out of county special school or college because there is no appropriate provision available locally. Such students will receive transport at the start and end of each term, half term and at other school/college closures. Any additional transport will be the responsibility of parents/carers.

The County Council provides some mobility/independence training for students with learning difficulties or disabilities. Children in special schools will be subject to transition plans in year 9 and independence training can form part of that plan. Some colleges also provide mobility/independence training.

7. Students attending providers outside Hampshire

The County Council may provide assistance with transport to support students attending providers outside of the county but students need to qualify for support against the criteria outlined in paragraph 3. The provider attended may also be able to provide some support.

8. Students attending providers in Hampshire but living outside the county

Such students should apply to their home Local Authority for assistance. However, providers themselves may provide assistance exceptionally and are not bound by county boundaries.

9. Applying for assistance with transport

Students wishing to apply for help with transport can do so by accessing the Hampshire County Council website where further details are available. The link is

<http://www3.hants.gov.uk/yourfuture.htm>

Students may also wish to apply to colleges direct for help. Below are details of the colleges and their contact details together with an outline of the assistance they provide.

10. Appeals/Complaints

Complaints regarding any aspect of the policy statement must first be taken up with the local authority. If these do not result in a satisfactory outcome, young people or their families may complain to the Secretary of State.

Students wishing to make an appeal regarding a transport entitlement decision or subsequent transport arrangements should write to the Head of Information Transport and Admissions, Children's Services Department, Hampshire County Council, The Castle, Winchester, Hampshire, SO23 8UG. The appeals process is provided in [Appendix 1](#).

11. College and School Details

Hampshire College and Sixth Form Policy Statements 2017/18

Please see below a list of all Hampshire colleges and sixth form providers and follow the link to the individual establishments travel information. For full, up to date, travel information for each college please refer to the relevant college website.

ALTON COLLEGE

ANDOVER COLLEGE, ANDOVER

BARTON PEVERIL COLLEGE, EASTLEIGH

BASINGSTOKE COLLEGE OF TECHNOLOGY

BROCKENHURST COLLEGE

EASTLEIGH COLLEGE

FAREHAM COLLEGE

FARNBOROUGH COLLEGE OF TECHNOLOGY

THE SIXTH FORM COLLEGE, FARNBOROUGH

HAVANT COLLEGE

HIGHBURY COLLEGE, PORTSMOUTH

ITCHEN COLLEGE

PETER SYMONDS COLLEGE

PORTSMOUTH COLLEGE

QUEEN MARY'S COLLEGE, BASINGSTOKE

RICHARD TAUNTON SIXTH FORM COLLEGE, SOUTHAMPTON

SOUTH DOWNS COLLEGE, WATERLOOVILLE

SOUTHAMPTON CITY COLLEGE

SPARSHOLT COLLEGE

ST VINCENT SIXTH FORM COLLEGE

TOTTEN COLLEGE

ALTON COLLEGE

- Alton College has a partnership with Stagecoach to provide the bus service. Annual or term Unirider bus passes can be purchased directly from the Stagecoach website: <https://www.stagecoachbus.com>. The Unirider pass can be used 7 days a week on any Stagecoach bus in Hampshire, Surrey and West Sussex.
- Stagecoach bus routes to the College include: Hartley Wintney, Fleet, Farnham (starts in Guildford), Haslemere, Liphook, Liss, Petersfield, Clanfield, Alresford (starts in Winchester), Bramdean and Basingstoke.
- The College offers term season tickets for South West Train journeys to Alton at reduced rates. Alton train station is within easy walking distance of the College. Tickets can be purchased via the College online store: <http://store.altoncollege.ac.uk>

- For households with an income of less than £22,000, the 16-19 Discretionary Bursary can provide financial support towards travel (bus or train) to Alton College. Further information can be found on the College website: <http://www.altoncollege.ac.uk/sixth-form/funding-and-finance>
- Students that live in Surrey, can apply for a Surrey Fare Card which offers discounts on bus and train services to and from their home. For further information please see the Fare Card Scheme website: <http://new.surreycc.gov.uk/roads-and-transport/buses-and-trains/bus-tickets-passes-and-travel-discounts/student-fare-card-scheme>

www.altoncollege.ac.uk

ANDOVER COLLEGE, ANDOVER

(Figures based on the 16/17 academic year)

Andover College offers a number of subsidised tickets on Campus buses, Stagecoach buses and South West trains. The annual cost is variable dependent upon your preferred travel choice, however all passes are payable in ten affordable interest free monthly instalments, if you apply before the start of term. You may also be able to apply for assistance with the cost from the college's discretionary Learner Support Fund.

Transport Service	Annual Cost
Campus Bus Amesbury, Boscombe Down, Durrington, Figheldene, Larkhill, Netheravon, Perham Down, Shipton Bellinger and Shrewton	£495
Stagecoach Goldrider Any Stagecoach bus in Hampshire or Wiltshire	£515
Stagecoach Megarider Stagecoach Andover Town Centre routes Areas covered include Andover town centre, Enham Alamein and Charlton. For a map please go to	£270
South West Trains Rail Winchester, Basingstoke, Whitchurch, Overton, Salisbury and Grateley	£630
College Direct Service Areas with little or no public service. Please see below	£590
Students travelling from Tidworth, Ludgershall or Chute Please see below	£600

College Direct Service

If you require travel to Andover College and there is no public service from your area to get you to the College it may be possible for the College to subsidise a Campus service from your area. This will be dependent on student numbers and financial viability. It is important to register your interest when you complete your online registration forms for the College. Areas currently covered include; Winterslow, Stockbridge, the Wallops, Burbage, Pewsey and Upavon.

Students Travelling from Ludgershall, Tidworth or Chute

If students reside in the Ludgershall, Tidworth or Chute areas Wiltshire Council will be able to provide a subsidized travel pass. In the 2016/17 academic year the cost of the pass was £650 however, if your gross annual household income was less than £20819 in the 15/16 tax year the cost was £175. If you live in these areas, you should contact Wiltshire Council for a travel pass, as unfortunately the

College will not be able to offer a subsidized pass.

How to Apply – Ludgershall, Tidworth & Chute

Please contact Wiltshire Council on 0300 456 0100 or go to www.wiltshire.gov.uk If you require assistance with SEN travel you should contact 01225 713308 to discuss your requirements.

Special Educational Needs Travel – Hampshire Students

For further details, please contact Hampshire County Council's transport team on 01962 845970 or go to www3.hants.gov.uk

How Do I Know What Pass to Order?

For independent travel advice please go to www.travelinesw.com or call them on 0871 200 2233. Alternatively, if you know your local provider please see the following websites or telephone for timetable information

www.stagecoachbus.com 0345 121 0190

www.southwesttrains.co.uk 0345 6000 650

Need help with the cost?

Families with a low household income will be able to apply for help towards the cost from the discretionary learner support fund. Further details and an application link will be contained on the College's registration forms or copies will be available for collection from the College.

www.andover.ac.uk

BARTON PEVERIL COLLEGE, EASTLEIGH

Local Authorities have no legal obligation to provide travel assistance for students after the age of 16. Barton Peveril has transport arrangements in place for students who meet the conditions set out below.

To qualify you must be a full-time student and:

- be under 19 years of age on 1 September prior to the start of the course
- live in your parents' home or with your legal guardian
- live more than four miles from the College measured by the most direct route

Details of the bus routes covered by the college transport arrangements can be found on the college website – www.barton-peveril.ac.uk.

The arrangements differ depending upon where the student lives therefore any queries regarding transport to College please do not hesitate to contact: Transport Officer, Barton Peveril College, Telephone 023 80 367214

www.barton-peveril.ac.uk

BASINGSTOKE COLLEGE OF TECHNOLOGY

SWT Rail Users:

- For full time learners who live in or beyond: Winchester, Andover, Fleet, Mortimer etc. BCoT offers a 50% subsidised South West Trains rail pass. This will allow learners to travel between their home station and Basingstoke, Monday to Friday in term time only. **The total cost is still undecided for 17-18, so it is advised to check our webpage for further updates.**
- Full time learners from Hook can purchase a new subsidised rail pass. The ticket is valid Monday to Friday in term time only. **The total cost is still undecided for 17-18, so it is**

advised to check our webpage for further updates.

Stagecoach Bus Users:

- Learners are now able to purchase their bus pass on line at www.buymyunirider.com from the **beginning of August 2017**
- Unirider Zone 1: **For full time learners only**
Sherfield on Loddon, Sherborne St John, Old Basing (The Hatch), Kempshott Park, Hackwood Park Gates and Oakley. **The total cost is still undecided for 17-18, so it is advised to check our webpage for further updates.**
- Unirider Zone 2:
Full time learners living outside the Stagecoach Unirider Zone 1 can receive a 25% subsidised bus pass for use on journeys to Basingstoke from out of town areas including Baughurst, Hook, Overton, Pamber Heath, Tadley and Whitchurch. You will also be able to use the pass in Zone 1. **The total cost is still undecided for 17-18, so it is advised to check our webpage Please note – you must live in Zone 2 to apply for this pass.** Checks will be made and Stagecoach will take action if passes are requested inappropriately.
- Zone 1 and 2 tickets are valid for 7 days a week and allow free unlimited travel throughout the UK (except London) on all Stagecoach bus services.
- **Are you from one of the following schools?**
If you went to either Amery Hill Secondary School, Eggars School, Perins Community School or Fernhill Secondary School in 2016/2017, we will refund the cost of your transport; if bought through one of the college schemes as described in this guide; and your attendance per term is 90% or higher.

Financial Assistance:

- BCoT may be able to help with your annual travel (bus or rail) pass if your household income is £21,000 or below. A BCoT Financial Support for Learners form can be downloaded from our website (www.bcot.ac.uk).
- Travel assistance is also based on termly attendance, if a learner does not achieve 90% attendance the next terms travel pass maybe withheld until attendance has improved

The above information will be sent out by email to all BCoT applicants in July 2017 If you have any questions about travel or financial assistance offered by BCoT please call Student Experience on 01256 306393, 01256 306608 Monday to Friday.

www.bcot.ac.uk

BROCKENHURST COLLEGE

- Brockenhurst College provides subsidised travel to students via an extensive network of College bus routes. Academic season passes for travel on the national rail network are also available through the College. Brockenhurst railway station is a safe and easy 7 minute walk from the College and subsidised bus passes for connecting travel on Wilts & Dorset, More Bus and Salisbury Reds services are available.
- A detailed breakdown of all current services, bus timetables and 2016/17 costs is available on the College website (<http://www.brock.ac.uk/sixth-form/travelling-to-brock/>). Details of pricing and services offered for 2017/18 will be available at the above link from June 2017, in the interim please direct travel enquiries to the Travel & Student Finance Coordinator (travel@brock.ac.uk).

- 2017/18 guidelines and eligibility criteria for bursaries and financial support are available on the College website (<http://www.brock.ac.uk/sixth-form/bursaries-financial-support/>); bursary applications for academic year 2017/18 can be made 01.06.2017 onwards - forms available for download at the above link from 01.05.2017. Subject to a completed application and attendance/performance commitments, students eligible for the 'discretionary' and '19+' bursaries can purchase travel passes through the College at a further discounted rate of 50%. Students eligible for the 'vulnerable bursary' can opt to use this fund to purchase travel through the College. Please refer to the website or contact the Student Finance & Welfare Advisor (financialsupport@brock.ac.uk) for more information.
- All travel purchased through the College is sold on a termly basis with payments via our online BrockShop. For 2016/17 Brockenhurst College offered further discounts for early payment in full and an option to spread the cost through instalments at no additional charge. To ensure value for money, travel on all College bus routes was also available to students with reduced timetables on a journey by journey basis (cash payments only, payable to the driver). A full refund is available if an applicant chooses not to attend.

www.brock.ac.uk

EASTLEIGH COLLEGE

Eastleigh College is easily accessible from across the Hampshire region with excellent road links (located five minutes from the M27 and M3) and rail links (two stations located 15 minutes walk from the college) in addition to local cycle paths and various bus services across the Hampshire region. As a college we do not want essential transport costs to be a barrier to students accessing 'outstanding' vocational education, so we have a bursary scheme to support full-time students with the costs of travel.

A travel bursary will be available to new students on a first come first served basis who are:

- aged between 16-18 years of age
- registered as living in excess of three miles from Eastleigh College (all distances measured by AA route planner from postcode address to the college)
- enrolled on a full-time course at Eastleigh College in 2017/18
- living in a household where the total income meets our bursary criteria maximum. For 16/17 this was £50K, (for 17/18 is yet to be confirmed)

Students can apply for a bursary to help towards the cost of travel to and from College.

Our travel bursary scheme for students varies according to the distance students have to travel and income levels of the family.

- Full details of the travel bursary offer including the eligibility criteria, will be available after 1/6/17 for the 17/18 academic year. Please enquire with the Student Finance team on 023 8091 1002 or email at studentsupport@eastleigh.ac.uk or find further information on our website <https://www.eastleigh.ac.uk/student-support/financial-support/> for details on how to apply, and for further information on student finance. Closing date for applications is Friday 15 September 2017. The fund may re open after this date if there sufficient funds to allow further awards.

The bursary offer will be available to all students aged 16-18 who are enrolled on a full-time government fully funded programme at Eastleigh College in academic year 2017/18. The College reserves the right to change the bursary offer, or to withdraw award at any time.

www.eastleigh.ac.uk

FAREHAM COLLEGE

- Subsidised travel for all students wishing to study full time at the college who live more than three miles away from the college
- Students can receive subsidy assistance for Stagecoach bus travel or First Bus travel.
- The College subsidises the cost of bus passes on an annual basis and students have the option to buy subsidised passes through the college.
- Students who are suffering hardship are offered additional support if they are using public transport. Assistance will take the form of subsidised bus travel where learners only meet the criteria of living three or more miles away from the college, or may take the form of supporting up to 100% of travel costs where families are in receipt of benefit or on a low income. This however will be discretionary depending on individual circumstances.
- Students who are eligible for Financial Support receive 100% assistance with public transport costs if they meet eligibility criteria for as long as additional support funding lasts.
- For further information please contact the college on 01329 815200 or e-mail to: Debbie.Goodall@fareham.ac.uk

www.fareham.ac.uk

FARNBOROUGH COLLEGE OF TECHNOLOGY

Bus Travel

- Students can purchase a Unirider bus pass from Stagecoach with whom we have negotiated a discounted price
- In addition to the discounted bus pass rates, the college contributes a generous subsidy for Unirider bus passes for all full time students
- Bus passes issued can be used out of college hours, at weekends and during holidays (excluding the summer holidays)
- Surrey residents can apply to Surrey County Council for a Student Fare Card which will enable students to travel at the same fare as an under sixteen year old. The card will cost £25 for the academic year 2016-17 and is valid from the date of issue until the following August
- The college has negotiated a special service between the Whitehill/Bordon area and the campuses in both Aldershot and Farnborough for ease of travel for students

Train Travel

- Students can purchase season tickets through Farnborough College of Technology, and receive a 15% discount.
- Season Tickets are valid for day time travel, during term times.
- Railway stations are situated within walking distance of both Farnborough (Farnborough Main, Farnborough North and North Camp) and Aldershot.

www.farn-ct.ac.uk

THE SIXTH FORM COLLEGE, FARNBOROUGH

- The College maintains a close relationship with Stagecoach Buses to secure the most efficient services and the best discount deals for our students. Stagecoach bus passes offer additional value as they can be used outside college hours, including holidays.

- Listed below are some of the subsidised routes available to our students wishing to travel by Stagecoach buses:
Aldershot, Ash, Ash Vale, Blackwater, Camberley, Church Crookham, Crondall, Crowthorne, Farnham, Fleet, Hartley Wintney, Hook, Odiham, Sandhurst, Wokingham, Yateley
- We also offer scholar train travel passes for students.
- The College is situated between three train stations – Farnborough Main Line, Farnborough North and Frimley, all are within easy walking distance.
- For students whose parents/guardians annual income is less than £21,000 there is a travel bursary available, subject to eligibility criteria.
- Disabled students are guaranteed a parking space on site when they have passed their driving test.
- Students living in Surrey can apply for a Student Bus or Train Fare Card for £25.00 from Surrey County Council, which entitles them to discounted travel.

www.farnborough.ac.uk

HAVANT COLLEGE

The College recognises travel costs should not be a barrier to engagement in education and as such offers financial assistance to support students to cover their cost of public or private transport. The College has excellent public transport links being near to Havant train station and the Stagecoach bus station. In addition the College has student parking facilities which students' are entitled to use on a free, first-come basis but the College offers no guarantee of a space on a daily basis.

Travel Assistance headlines:

Certain conditions apply and the three headline criteria for travel assistance are:

1. The student lives more than 8 miles away from the College and is entitled to £200 a year support (non means tested), payable over 3 terms £70, £70, £60 and subject to good attendance.
2. A student within 4 to 8 miles can be entitled to travel assistance but this will require proof of benefits and lower income
3. Students not meeting criteria 1 and 2 above receive no financial assistance but can be considered on a case review basis.

You will be considered eligible for assistance if:

- Your family meet the criteria for the Student Support Fund
- Your family are otherwise suffering financial hardship, and provided that –
- You are NOT eligible for any other travel grant.

You can apply if:

- You are aged under 19 on the 1st September prior to the start of the course.
- You are a 'home' student, and –
- You will be studying a full-time Further Education course at Havant College, and –
- You live more than four miles away from the college, measured by the most direct route.

You will NOT be eligible for funding from the Havant College Student Support Fund if:

- You are an overseas student.
- You will be attending a part-time course.
- You will be attending a Higher Education course.
- You will be in receipt of any other travel grant.

Conditions of the Scheme:

- You must abide by the rules of the college and the terms of your learning agreement.
- If you are asked to leave college or choose to leave before the end of the course, no further payments will be paid after the date of your last attendance.
- If your attendance falls below an acceptable level, or if your attitude towards your college programme is unacceptable, the College reserves the right to withdraw further payments.

The College has arranged a subsidised transport provision with Stagecoach Buses, this can be accessed through the Stagecoach website. Stagecoach are on campus in August for enrolment and at various opening evenings during the year.

Financial queries on travel assistance:

Please contact the Finance Office, Havant College, New Road, Havant Hants, PO9 1QL
Telephone: 02392 483856 or email: finance@havant.ac.uk

www.havant.ac.uk

HIGHBURY COLLEGE, PORTSMOUTH

Highbury College offer the following travel assistance to enable all eligible full time students over the age of 16 to access the course of their choice.

- A First or Stagecoach bus pass for use during Term Time, or
- A Travel allowance of up to £100 per term for those who travel by train, car or ferry, or
- Up to £300 per Academic year for those students from the Isle of Wight, or
- An allowance towards a bike and bike safety equipment

Discounted rate bus passes for a whole or half term are also available for any student to purchase. Eligibility for a free bus pass or contribution to the cost of a bike or other travel costs is dependent on family income, and type of course. "Full cost" courses are not eligible for travel assistance. Free student parking is available at the Cosham and Northarbour Campuses, and free parking for Blue Badge holders is available next to the Highbury College Portsmouth Centre Campus.

Students should apply to Highbury College as soon as they receive an offer. Application forms for financial support during 2016-17, including transport, will be available from June 2016.

Highbury College Student Engagement Team 023 9232 8954 or 02392 328947
Email: Welfare@highbury.ac.uk

www.highbury.ac.uk

ITCHEN COLLEGE

- Heavily subsidised transport arranged to service the areas to the north, north-east and to the east of the city of Southampton, including Gosport, Portchester, Fareham, Stubbington, Lee on Solent, Titchfield, Warsash, Locks Heath, Hamble, Netley, Swanmore, Bishops Waltham, Durley, Fair Oak, West End, Hedge End, Botley, Romsey, North Baddesley, Swaythling, Portswood, Bitterne Park, Chandlers Ford, Eastleigh, Boyatt Wood and Stoke Park areas.

- Details of the college contract bus routes can be found on the college website - www.itchen.ac.uk
- All contract bus routes heavily subsidised, allowing return travel from any area on the routes for around £1.40 per day.
- Excellent bus tracking app enables students and staff to track the progress of all contract buses in real time.
- Subsidised travel passes (bus or train) for students living in other areas (by arrangement).
- Free travel for students if their families are in receipt of Income Support.
- Discounted termly tickets available to cover Hampshire, Totton and Southampton areas, through Blue Star.
- Later start to the college day (9.15am), for safer, more convenient journeys to college.
- E-mail address: info@itchen.ac.uk
- Effective communication with bus users through Twitter and a dedicated bus-tracking app.

www.itchen.ac.uk

PETER SYMONDS COLLEGE

- The College does not subsidise transport provision for its full-time 16-19 year old students. We do not run a College bus service, but we maintain a close relationship with the major bus providers to ensure a reliable, efficient service and to secure the best possible student travel deals. Discounted bus passes for Peter Symonds Students are available direct from the bus companies, Stagecoach, Bluestar and Wheelers.
- Discounted educational rail passes are also available for travel into Winchester by train, these tickets are purchased through the College itself. Transport information is available during the Taster Days each summer term, and on the College website, or by contacting Student Services.
- The Student Support Fund offers assistance with public transport costs to those on low incomes. Cases are dealt with on an individual basis according to the level of need. Please contact the Student Services Department for more advice, and for up to date information on eligibility.
- Disabled students are guaranteed a parking space when they have passed their driving test.
- Students with Special Needs are advised to contact their local LEA for information about extra help for which they may be eligible.
- For more information please contact Student Services on 01962 857547 or email student.services@psc.ac.uk

www.psc.ac.uk

PORTSMOUTH COLLEGE

Aims

- To help students from all backgrounds and further distances to access their chosen college and courses
- **Please note that:**
- All distances are taken in straight-line measurements ('as the crow flies').
- The college does not pay interim expenses before a student has arranged their bus pass
- This policy is dependent on limited funding and is therefore subject to change at short notice.

Section 1: Bus passes and services

Bus Pass Service (for all applicants, whether in receipt of a travel subsidy or not)

First Bus Passes are available to buy in college. These are seven day passes valid during term-time and are at present subsidised. Payment must be made in full before College can release any bus pass.

Students will be required to bring:

- a completed Travel Grant Application Form
- any financial contribution that is required

Stagecoach Bus Passes are available to buy at a subsidised rate via the Stagecoach website: <https://www.stagecoachbus.com/regionaltickets/south/portsmouth-and-havant/unirider>. Prices depend on the area of travel required. Passes are valid seven days a week and must be used together with a valid student ID card.

Weekly bus passes can be purchased directly from the bus driver but these do not attract any subsidy.

College Bus Service

Portsmouth College has its own service, PC1, providing a convenient route for students living in Fareham, Portchester, Paulsgrove, Hilsea and Stamshaw areas which are not easily served by either First Bus or Stagecoach services.

This is a subsidised service with the cost comparable to other First Bus Passes. It provides a pick-up each morning starting at Fareham Bus Station through Portchester and the Portsmouth North area, arriving at College in time for the start of the daily timetable. A return service departs from College at the end of lessons each day. This ticket is also valid on other First services throughout Hampshire for student's alternative start/finish times.

On completion of the college year a refund is made on any purchased passes to subsidise them further, subject to students having achieved a minimum attendance level of 90% for the year.

Travel grants

Please note, all travel support is subject to a minimum average of 90% attendance at all timetabled sessions.

Eligibility, rates and administration

Travel grants are available to students living more than 2 km away from College in the PO1- PO6 post code areas and who are not:

- in receipt of financial travel assistance from Portsmouth City Council or Hampshire County Council
- in receipt of a Bursary award from Portsmouth College (students in receipt of a bursary based on household income threshold of £25,000 are entitled to full support with their transport costs with no financial contribution from them)
- participating in the Portsmouth College Bike Scheme

Please see the following link for details of discounted academic passes for ferry transport from the Isle of Wight.

<http://www.wightlink.co.uk/ferry-travel-info/tickets-and-prices/season-tickets>

If you leave College whilst in receipt of a subsidised bus pass you will be asked to repay a pro-rata amount of the subsidy given as passes are non-refundable once issued.

Part Time Students

Part-time students on a course of 60 hours or more may be eligible for a proportion of the support available to full time students. Students should contact the college for more information

Bike Scheme

The College also offers a Bike Purchase Scheme. The College will contribute up to £120 towards the purchase of a bike and relevant safety equipment. Proof of purchase will be required before any contribution can be made. Any student taking advantage of this scheme would not also be able to access any of the above financial help with bus passes or travel grants. The bike scheme is available in the Autumn and Spring terms only.

Any current or prospective student interested in further details of our transport options, current prices and support available should contact hello@tpc.ac.uk or phone the college on 023 9266 7521.

www.portsmouth-college.ac.uk

QUEEN MARY'S COLLEGE, BASINGSTOKE

Stagecoach Bus Passes

- Stagecoach bus passes are available to all students travelling to the College from areas serviced by Stagecoach. Applications can be made from August 2017 via Stagecoach's online system www.buymyunirider.com
- A Zone 1 ticket is available for students living within the Basingstoke area. 2017/18 prices will be confirmed as soon as possible in the summer term and displayed on our website www.qmc.ac.uk
- A Zone 2 ticket is available for students living outside the immediate Basingstoke area. Again, 2017/18 prices will be confirmed as soon as possible in the summer and displayed on our website www.qmc.ac.uk. The ticket price will attract a small College subsidy. You must live in the appropriate area to claim this ticket. A zone map is available at www.stagecoachbus.com
- Both passes are available for use outside college hours and during college holidays.

College Bus Passes

- College arranges coach services to Andover, Burghfield, Fleet, Hook (including Odiham & Warnborough), Newbury and Whitchurch/Overton. An annual ticket will cost £395 for 2017/2018. The buses only run once a day each way in term time. Buses are contracted on an annual basis, consequently refunds are not available if a student opts to use an alternative form of transport or leaves part way through the College year. See our website for further details www.qmc.ac.uk

Financial Support

- Financial support may be available to provide assistance with any of the above mentioned transport options to students who are in proven financial need. We are able to help students who are: care leavers, looked after by the local authority, in receipt of Income Support in their own right, or disabled and in receipt of Employment Support Allowance *and* Personal Independence Payment. Additionally, we can help students if the household income of the family is below £21,000. Usually payments are made in-kind to providers for items such as transport.
- Individual arrangements in cases of extreme hardship are also available through

Queen Mary's Foundation, a charity which supports our students.

Train Passes

- We can offer a South West Trains Scholars Termly Ticket which allows travel at reduced rates to and from College between stations in a wide area bordered by Redbridge in the south west, Salisbury in the west, Reading in the north, Woking in the north east, Guildford in the east and Portsmouth in the south. However, please check boundaries and station details with the College Help Desk to ensure that this is a cost-effective option for you. It should be noted that the full termly price is still payable if the student starts or leaves part way through a term. South West Trains confirm their prices for the next academic year in August 2017. Prices vary according to route.

Contact College using the following e-mail address info@qmc.ac.uk

www.qmc.ac.uk

RICHARD TAUNTON SIXTH FORM COLLEGE, SOUTHAMPTON

Transport Information for Sept 2017

Bus number R901

Covering Hamble, Ingleside, Sholing, Bitterne,
Operator Xelabus – private hire

Termly pass must be purchased from college a term in advance, or subject to a £20 fee. £100 travelling within Southampton £150 travelling within Hampshire Proof of your bus pass enables you to travel on other Xelabus inner-city routes at child fare.

Bus Number 902

Covering Romsey (Station), Abbotswood, North Baddesley, Lordshill
Operator – Wheelers – Private hire

Termly pass must be purchased from college a term in advance, or subject to a £20 fee. £100 travelling within Southampton £150 travelling within Hampshire. Proof of your bus pass enables you to travel on other Wheelers service routes at child fare.

Bus number R903

Covering Langley, Hythe, Totton via Blackfield and Totton College
Operator – First Bus – private hire

Termly pass must be purchased from college a term in advance, or subject to a £20 fee. Non-pass holders can travel for £5 per journey. £100 travelling within Southampton £150 travelling within Hampshire

Bus number R903A

Covering Hythe, Marchwood, Totton
Operator - First Bus - Private hire

Termly pass must be purchased from college a term in advance, or subject to a £20 fee. Non-pass holders can travel for £5 per journey. £100 travelling within Southampton £150 travelling within Hampshire

Bus number R904

Covering Bishopstoke, Eastleigh, Chandlers Ford,
Operator – College (Minibus)

Termly pass must be purchased from college a term in advance, or subject to a £20 fee. £100

travelling within Southampton £150 travelling within Hampshire.

Bus number U9

Operator – Unilink – public service

Covering Southampton General Hospital, Shirley Townhill Park, Bitterne, Portswood, Highfield Campus, Burgess Road, Hill Lane

Southampton travel zone = £75/term

Southampton Plus travel zone = £150/term

Network travel zone = £200/term

Bus number U6

Covering Southampton General Hospital, Shirley, Winchester Road (for RTSFC) Highfield, Portswood, Bevois Valley, Royal South Hants hospital, City Centre, Dock Gate 4

Operator – Unilink – public service

Southampton travel zone = £75/term

Southampton Plus travel zone = £150/term

Network travel zone = £200/term

Bus number X11

Covering Lordshill, Shirley

Operator – Xelabus – public service

Standard fares must be purchased on the bus or contact Xelabus offices in Eastleigh for more information.

Bus number X12

Covering Southampton City Centre, Freemantle, Millbrook, Shirley (then a 20min walk to RTSFC)

Standard fares must be purchased on the bus or contact Xelabus offices in Eastleigh for more information.

Bus number 40

Covering City Centre, Vincent's Walk, Central Station North side to RTSFC (once a day in each direction)

Operator - First Bus – public service

Payment on bus

Red Jet Shuttle Town Quay to RTSFC

Operator RTSFC

Students travelling from the Isle of Wight - Subject to availability By prior arrangement only – free service

King Edwards School Services

Covers most of the areas within the Hampshire county

Operator - King Edwards School

A one-off registration fee of £25 must be paid to KES at:

<https://www.kes.hants.sch.uk/keta-transport/information/richard-taunton-college-students>.

Students will be charged either £150 per term, or 75% of the full ticket price per term – whichever is the greater amount.

www.richardtaunton.ac.uk

SOUTH DOWNS COLLEGE, WATERLOOVILLE

Our aim is to provide a travel scheme that meets all our students' needs and to prevent any barriers to education. We work closely with both Stagecoach and First Group bus companies in order to provide as many direct routes to college as possible.

- All full time students can order a discounted student bus pass.
- Additional travel support is available to full time students aged 16-18 who live in certain post code areas (this information can be obtained from the College) and are still enrolled and attending their course on 30th October 2017. This support is referred to as a one off College Subsidy.
- Free bus passes may be available to students who are living beyond a mile of college (measured by Google maps walking mode) and either the student or the parent/carer is in receipt of an Income Based Benefit.
- The 2017-18 travel information will be available from May onwards
- Contact details: Telephone: 023 9279 7979 email: studentfinanceandtravel@southdowns.ac.uk

www.southdowns.ac.uk

SOUTHAMPTON CITY COLLEGE

As a city centre college, we are well served by public transport routes and we are working with local public transport providers to provide affordable transport for all students across the city.

We recognise that the cost of travel can be a worry for students and their parents/carers so City College is pleased to offer subsidised bus travel for all 16-18 year olds who attend City College from the Southampton and Hampshire areas, which enables travel during daytime, evenings and weekends at a significantly reduced rate.

We support students to develop a proactive approach to their travel arrangements through our bursary scheme. For qualifying students (household income less than £25k) the bursary can meet all of your travel costs.

Keep an eye on Facebook and the www.southampton-city.ac.uk website or for more information email us at enquiries@southampton-city.ac.uk or give us a call on 02380 48 48 48.

www.southampton-city.ac.uk

SPARSHOLT COLLEGE

- Due to the sparsity of specialist provision of the curriculum areas provided by Sparsholt College, the College offers a heavily subsidised bus service providing transport from the following areas:
Aldershot, Alton, Amesbury, Applemore, Bashley, Beaulieu, Bishops Down, Bishops Waltham, Bitterne, Bodenham, Bordon, Bournemouth, Brockenhurst, Broughton, Bulford Camp, Bursledon, Calmore, Chandlers Ford, Chilworth, Christchurch, Colden Common, Cosham, Cowplain, Dibden, Downton, Fair Oak, Fareham, Farnham, Firsdawn, Fordingbridge, Four Marks, Fratton, Freefolk, Gosport, Havant, Hedge End, Hilsea, Hinton Admiral, Horndean, Hythe, Iford, Kings Somborne, Kingsclere, Lee on Solent, Locks Heath,

Ludgershall, Lymington, Lyndhurst, Marchwood, Michelmersh, Middle Wallop, Middle Winterslow, New Alresford, New Milton, New Greenham, New Milton, Newbury, North Baddesley, North Waltham, Oakley, Otterbourne, Overton, Ower, Perham Down, Petersfield, Pokesdown, Porchester, Portsmouth, Portswood, Redenham Park, Ringwood, Romsey, Salisbury, Sandleford, Sarisbury Green, South Wonston, Stockbridge, Stubbington, Sutton Scotney, Sway, Swaythling, Tadley, Thatcham, Tidworth, Titchfield, Twyford, Up Somborne, Waltham Chase, Waterlooville, West Meon, West Winterslow, Weyhill, Whitchurch, Whiteley, Wickham, Widley, Winterslow and Woolhampton collecting students between point of departure and the College.

- Rail passes are available to students from the following areas Ashurst New Forest, Basingstoke, Bitterne, Botley, Eastleigh, Hamble, Hedge End, Hook, Micheldever, Millbrook, Overton, Netley, Redbridge, Sholing, Shawford, Southampton, St Denys, Swanwick, Swaythling, Totton, Whitchurch, Woolston. This pass includes a Stagecoach bus pass from Winchester Train Station direct to the college.
- The cost for the Campus bus is calculated based on the distance from college. Each area is split into a banding. Band A (under 10 miles) £540, and B (10-20 miles) £650, Band C (20-30 miles) £740, and Band D (over 30 miles) £835. Students can pay by ten monthly instalments (interest free).
- The cost for the combined Rail/Stagecoach service is calculated based on the distance from college. Each area is split into a banding. Band A (under 10 miles) £550, Band B (10-20 miles) £665, Band C (20-30 miles) £775
- Students can pay by ten monthly instalments (interest free).
- Students are able to apply for a Goldrider Stagecoach bus pass through the College at a price of £570 per academic year or a No.7 Stagecoach bus pass (Winchester City Centre to Sparsholt College bus only) at a price of £325 per academic year. Students can pay by ten monthly instalments (interest free).
- All prices listed are the 2016/17 costs as 2017/18 have not be set when this document was produced.
- Students with Special Educational Needs should contact their Local Education Authority for an application form and guidance on their transport schemes.
- Student with families on a low household income may be eligible to apply to the College's Discretionary Learner Support Fund for help with transport costs.
- For more information contact Student Transport on [01962 797346](tel:01962797346) or Student Finance on [01962 797267](tel:01962797267) or email transport@sparsholt.ac.uk

www.sparsholt.ac.uk

ST VINCENT SIXTH FORM COLLEGE, GOSPORT

St Vincent Sixth Form College is easily accessible from across the Gosport and Fareham communities and surrounding Boroughs. The College is serviced by a main road link in addition to local cycle paths and various bus services across the Hampshire region. In addition, St Vincent has extensive car and motorcycle parking facilities, including secure cycle storage facilities.

As a college we do not want essential transport costs to be a barrier to students accessing our range of A-Level and Vocational courses plus our award winning facilities. As such students can apply for a discounted bus pass which covers the cost of their travel to and from college and can be used weekdays on all First Hampshire services.

Students from Henry Cort, Fareham Academy, Cams Hill, Bridgemary and Brune Park Schools can access the Eclipse Express Bus service to college which takes only a few minutes. In addition to this

the College also provides a bespoke bus service for students attending Brookfield, Crofton and Bay House School routes to the College community at the start and end of the day with students having access to all local services at other times.

Financial support with the cost of a bus pass will be available to students who are:

- enrolled on a full-time course
- registered as living more than one mile from St. Vincent College (distance determined by the college based on address post code)
- their families gross household income is less than £30,000.00 a year

Students travelling from Portsmouth can also have their ferry tickets reimbursed if the above criteria are met.

Students with Learning Difficulties may be eligible for free transport, subject to meeting Hampshire County Council's (HCC) SEN criteria. Please contact HCC regarding this.

All students must apply via our Finance Office and bus passes are purchased termly subject to minimum attendance, achievement and behaviour levels. Please contact our Finance Team on 023 9260 3633 for more information or email finance@stvincent.ac.uk.

www.stvincent.ac.uk

TOTTON COLLEGE

Transport to Totton College is via the public bus and train service. The service is able to support students travelling from a range of locations such as the Waterside, New Forest, Southampton and Romsey, including locations from Salisbury and the Isle of White, please just ask if you are unsure.

Transport for students is an important factor to consider and we recognise that it should not be a barrier, therefore the college is able to offer student bursaries to help with transport, please contact the college via info@totton.ac.uk or 023 80874874 for further information, help and advice.

www.totton.ac.uk

The following schools within Hampshire also provide post-16 education in their sixth forms. Entitlement to assistance with transport is based on Hampshire County Council policy.

THE ARNEWOOD SCHOOL

Bay House School, Gosport

THE BURGATE SCHOOL AND SIXTH FORM – POST 16 TRANSPORT NETWORK

New Forest Academy, Holbury

Oaklands Catholic Comprehensive School, Waterlooville

Ringwood School, Ringwood

Yateley School, Yateley

THE ARNEWOOD SCHOOL

- Students joining The Arnewood School benefit from currently adequate public transport including Wilts and Dorset bus routes and south coast rail links. The school is approximately 10 min walk from the railway station in New Milton.
- The Arnewood School currently offers subsidised travel to post 16 students wishing to study full time at the school who are eligible to receive subsidy assistance in the form of a coach pass for the school coach which travels from Pennington, Everton, Milford and Hordle.
- Alternatively those students who are eligible to apply to the school's means tested 16-19 bursary fund may use this grant to fund their sixth form travel.
- The school is served by local cycle paths including one which runs past the school. Secure bike storage is offered on site at no cost to students.

www.arnewood.hants.sch.uk

BAY HOUSE SIXTH FORM, GOSPORT

- Bay House Sixth Form does not subsidise a transport provision for its students. However, students are able to purchase a discounted First bus pass through the school administration at a cost of £150 per term. The pass enables students to travel on local First bus services from Monday-Friday, term time only.
- Students in receipt of the 16-19 discretionary bursary are entitled to a free bus pass.

www.bayhouse.hants.sch.uk/sixth-form

THE BURGATE SCHOOL AND SIXTH FORM – POST 16 TRANSPORT NETWORK

- The Burgate Sixth Form is well supported by an extensive transport network covering all areas including Salisbury, Ringwood and The New Forest
- Many dedicated services run by Wilts and Dorset are offered with bespoke additional network benefits at no extra cost via Scholars passes
- Scholars passes may be purchased half, termly or annually from the providers
- The public X3 route also serves the Burgate Sixth Form regularly from the North and South on the A338
- Some financial assistance is available through the Bursary scheme (subject to student entitlement) with details of this support available from the Sixth Form Admin team
- Full details are available in the students and parents section of our school website including links and contacts to our transport providers.

www.burgate.hants.sch.uk

NEW FOREST ACADEMY

www.newforestacademy.org

OAKLANDS CATHOLIC SIXTH FORM COLLEGE, WATERLOOVILLE

- Students travelling to college by **First Hampshire**, may take advantage of the discounted college bus pass which is purchased through the Sixth Form Office. The cost of a bus pass is determined by the area in which you live or the type of pass you choose. Tickets are valid for unlimited travel either Monday – Friday, **or** seven days and may be bought termly or annually. Annual passes have the advantage that they may also be used during Christmas and Easter holidays.
- If you will be travelling to college by **Stagecoach**, then you may wish to take advantage of the special rate negotiated by the college for a bus pass. This is available to purchase directly online from Stagecoach at: www.stagecoachbus.com/tickets.aspx (select Waterlooville and Unirider options). The pass gives unlimited travel on all Stagecoach buses seven days a week, during the academic year in a large travel zone. Annual and termly passes are available.
- The College also privately contracts bus services from the Fareham/Porchester and Hambledon/Denmead areas and termly or annual passes can be purchased directly from the college for the use of these services.
- Help with meeting the cost of a bus pass may be available from the **16-19 Bursary Fund**. This fund is to help young people who face financial hardship in meeting the costs of participating in education and training post-16. Please note that a condition of a discretionary bursary is that a student's attendance remains at 90% or above.
- Details of how to buy the passes are available from the Sixth Form Reception from mid-June. If you would like more information on the bursary fund, or if you have any queries, please contact the Sixth Form Reception on 023 9225 9214 option 2 for Sixth Form.

<http://www.oaklandscatholicschool.org>

YATELEY SCHOOL, YATELEY

<http://www.yateleyschool.net/wp>

Home to School Transport - Review/Appeals Process

A young person (or a parent on behalf of their child) who wishes to challenge a decision about:

- the transport arrangements offered;
- their (or their child's) eligibility;
- the distance measurement in relation to statutory walking distances; and
- the safety of the route

may do so by writing to Head of Information Transport and Admissions, Children's Services Department, Hampshire County Council, The Castle, Winchester, Hampshire, SO23 8UG. The full Review/Appeals Process in relation to assistance with travel and eligibility is detailed within Hampshire County Council's Home to School Transport Policy, a link to which is included below;

<http://documents.hants.gov.uk/education/HometoSchoolTransportHTSTEntitlementPolicyandAppealsProcess.docx>

The process by which Home to School Transport appeals are handled for a young person attending a Post-16 provision matches that detailed in this Policy.

HAMPSHIRE COUNTY COUNCIL

POST 16 TRANSPORT POLICY STATEMENT CONSULTATION

**EXECUTIVE MEMBER FOR EDUCATION
DECISION DAY**

19 JUNE 2017

Consultation on Post-16 Transport Policy Statement

Purpose

Hampshire County Council is consulting with schools, colleges, pupils, and their parents ahead of the publication of its annual Post-16 Transport Policy Statement.

Description

Each year, central government's Department of Education, requires the County Council to publish a Post-16 Transport Policy Statement specifying transport provisions for students attending sixth form or college.

In summary, the County Council provides transport support only to students with a learning difficulty or disability. Pupils eligible for support will normally have an Education, Health, and Care Plan (EHCP).

The support provided requires an annual parental contribution (proposed £570 for the 2017/2018 academic year) which is waived in certain circumstances. Mainstream students are not normally supported with the cost of travel to their post-16 destination. However, students from low income families may be supported with travel costs by the 16 to 19 Bursary Fund, which is administered by colleges and other post 16 settings. Most larger post-16 organisations can provide comprehensive advice on transport services for students attending their setting.

Hampshire County Council invites your comments on the existing Policy Statement and any specific post-16 travel issues in your area.

We particularly welcome the views of young people of Sixth Form/college age, as well as year 11 students who will be moving on to sixth form or college next September.

Further information

Read the [County Council's Existing Policy Statement](#) .

More [information about Home to School Transport](#), our policies and help with transport and travel to school.

If you have any questions about this consultation, please contact:
passenger.transport.enquiries@hants.gov.uk

How to take part

Please submit your responses to the [consultation survey online](#).
The deadline for responses is 23:59 Friday 21 April 2017.

How are you responding to this consultation?	Mainly as	I am also
Parent/Carer of pupil or student aged up to 18 years, or 25 years with a statement of Special Educational Needs	60	1
Pupil/Student under 18 years, or 25 years with a statement of Special Educational Needs	65	6
Member of the public	13	28
School/College Governor	2	2
School/College staff including head teacher	6	6
Other education provider	1	-
Hampshire Councillor or Member of Parliament	-	-
Parish/Town Councillor or representative	1	-
Business/Chamber of Commerce	-	-

Other	
26	Post 16 parent going into further education
71	Parent of a student in Y11 due to start 6th form college in September
72	Parent of student aged up to 18 without a special needs statement
112	a school pupil
113	school pupil

Please tell us your age:	
0-15	39
16-18	47
19-25	-
26-39	5
40-59	64
60 or over	-
Prefer not to say	1

Please tell us your gender:	
Male	46
Female	102
Prefer not to say	5

case	Please tell us your full home postcode:
1	N/A
2	PO4 9JL
3	GU14 8BX
4	SO22 6RX
5	So404wu
6	SO40 3AY
7	SO40 2NU
8	so40 9hu
9	So40 7gy
10	SO40 2LR
11	GU51 3LW
12	GU17 9HZ
13	BH4 8JF
14	SO518PA
15	PO123PY
16	So40 7gl
17	GU9 0HL
18	GU52 6DQ
19	PO16 9ER
20	SO40 4LB
21	GU17 0ET
22	rg27 9sh
23	PO11 0BS
24	Po157gf
25	PO15 7LQ
26	Po8 0ha
27	Po15 6EJ
28	Po15 7jt
29	po15 6ht
30	GU52 7LW
31	gu512ta
32	GU51 3JJ
33	GU52 7LB
34	GU51 1AX
35	GU52 6HZ
36	Gu51 3hw
37	GU52 0YN
38	Gu51 1du
39	GU52 7SF
40	PO138FG
41	PO14 2HY
42	GU51 4NN
43	Po175el
44	GU526AS
45	GU511BF
46	GU51 3PS

47	gu513az
48	GU513JF
49	PO121JS
50	PO12 3NA
51	gu51 3ap
52	GU51 1HX
53	Gu51 5ap
54	PO14 2NY
55	GU52 6tj
57	PO15 7JL
58	GU526RU
59	GU51 NH
60	gu51 5nh
61	PO13 9BH
63	PO14 1RW
64	PO92RJ
65	GU51 2TL
66	GU51 4EX
67	GU52 6LF
68	PO9 1NJ
69	Po6 3pu
70	gu513dw
71	GU51 5TY
72	Gu511ar
73	Po92ff
74	SO50 4FX
75	PO11 9SP
76	GU34 5PF
77	so22 4je
78	SO22 4JZ
79	SO50 9BL
80	Gu51 2us
82	SO17 1DP
83	SO22 4NU
84	SO224JB
85	SO22 4HD
86	SO23 9TW
87	SO22 45B
88	SO23 9TE
89	so22 5pt
90	So22 5LT
91	So32 1fh
92	SO225LH
93	SO22 5PX
95	so21 2jb
96	S0226QL
97	SO50 6DQ

98	SO23 9PD
99	SO22 5PJ
100	so22 4dw
101	SP10 3JE
102	SO50 4LZ
103	SO22 5QD
104	so229jp
105	SO21 2DD
106	SO211TT
107	SO50 4DD
108	SO225LW
110	so504hg
111	SO21 2RT
112	so230qn
113	so224dt
114	so21 1sd
115	SO22 4DD
116	so224ew
117	SO225DR
118	S022 5PH
119	Hampshire, Winchester, Sparsholt, Ham Green, Cuckmere
120	SO23 7PX
121	SO534SX
122	SO53 3PY
123	SO22 4EE
125	SO21 2DG
126	SO32 1BD
127	SO211QQ
128	SO22 2JW
129	SO17 3QY
130	SO50 4SH
131	so534su
132	gu46 7sd
134	PO12 3BX
136	SO22 4LR
137	SO22 56GH
139	SO22 4HZ
140	SO239PS
141	SO24 0BU
143	so211jn
146	SO23 9PS
148	SO21 1UW
149	SO50 5SN
150	so22 5pn 119 stanmore lane winchester
151	so504gz
152	GU51 3NW

153	po167pd
154	Gu51 4NX
156	PO14 1RL
157	GU51 2TT
158	gu520xb

case	Please tell us the college you/your child/children curren...
1	Member of staff at Itchen College
2	St Vincent Sixth Form College
3	Our children stay on to 19 in our special school
4	Peter Symonds College
5	Brockenhurst
6	Barton Peveril
7	Barton Peverill/ Eastleigh
8	sparsholt college
9	Barton Peveril
10	Totton and Barton Peverill
11	The Sixth Form College Farnborough
12	The Sixth Form College, Farnborough
13	N/A
14	RTSFC
15	Fareham College
16	Peter Symonds College
17	farnborough sixth form college
18	Farnborough Sixth Form
19	Fareham college
20	Hounslow
21	The Sixth Form College, Farnborough
22	peter symmonds and farnborough sixth form and another
23	One at South Downs, other starting havant in sept
24	Fareham college
25	Henry Cort
26	To attend Highbury college
27	Havant College
28	Peter Symonds
29	Barton Peverill
30	Farnborough 6th form
31	farnbrough sixth
32	FARNBOROUGH COLLEGE OF TECHNOLOGY
33	FARNBOROUGH SIXTH FORM
34	Farnborough Sixth form college
35	Salesian College
36	Merrist Wood
37	Farnborough 6th
38	Farnborough college of technology
39	Either Farnborough 6th, Alton College or Queen Mary Basingstoke
40	Bay House
41	Bay House Sixth Form
43	Bayhouse sixth form
44	Farnborough 6th Form College
45	Farnborough Six Form
46	Farnborough 6th Form
47	Farnborough 6th form

48	Farnborough sixth form
49	Bay House
50	Bay House
51	farnborough Sixth Form
52	Farnborough 6th form
53	Farnborough 6th form
54	Bay House
55	Farnborough sixth form
57	CEMAST COLLEGE - LEE ON THE SOLENT
58	Farnborough 6th Form
59	Farnborough 6th Form
60	Farnborough Sixth Form College
61	Bay House Sixth Form
63	Bay House
64	Oaklands Waterlooille
65	Calthorpe Park School and Farnborough 6th Form College
66	Farnborough Sixth Form
67	Currently Calthorpe Park School, hope to attend Farnborough 6th Form
68	SOUTHDOWNNS COLLEGE
69	Oaklands RC Sixth Form
70	farnborough tech college
71	Either Farnborough 6th Form or QMC Basingstoke
72	Farnborough 6th form
73	Oakland catholic school and 6th form
74	Kings' School Winchester
75	OAKLANDS
76	Peter symonds
77	barton peveril
78	Peter Symonds
79	Peter Symonds
80	Farnborough Sixth Form
81	Kings' School
82	Peter Symonds
83	Peter Symonds College
84	Peter Symonds
85	Peter Symonds
86	Peter Symonds College
87	Peter Symonds
88	Peter Symonds College
89	Kings' School
90	Peter Symonds
91	UNDECIDED
92	Peter Symonds College
93	Peter Symonds College
95	Barton Peveril
96	Peter Symonds

97	Barton Peveril
98	Winchester College
99	Peter Symond's College
100	Peter Symmonds College Winchester
101	Peter Symmonds coll ege Winchester
102	Peter Symonds
103	Peter Symonds
104	Peter Symonds
105	Barton Peveril
106	Peter Symonds
107	Peter Symonds
108	Peter Symonds
110	Kings' school Winchester
111	Peter Symonds
112	Peter Symonds
113	peter symonds
114	Peter Symmonds
115	College of Agriculture, Food and Rural Enterprise
116	kings school winchester
117	Peter Symonds college
118	Peter Symonds
119	Lords Wandsworth Collage
120	Peter Symonds
121	Barton Peveril
122	Barton Peveril
123	PSC
124	Barton Pevril
125	Peter Symonds
126	Barton Peveril
127	Peter symonds
128	Peter Symonds College
129	Richard Taunton, Barton Pevril
130	City College Southampton
131	peter symonds
132	Addington School
134	Bayhouse School and Sixth Form
136	Kings' school winchester
137	idk
139	Peter Simons
140	Barton Peviral
141	Peter Symonds Colledge
143	none
148	Kings school winchester
149	kings school winchester
150	sparsholt collage
151	sparsholt college
152	Farnborough Sixth Form

153	barton peverill sixth form college
154	Bcot, queen mary's college basingstoke
156	Bay House 6th Form, Gosport
157	The Sixth Form College, Farnborough
158	Farnborough 6th form

case	Please list your comments on the existing Policy Statement
1	No commenrts
2	We have slightly modified our policy statement however; I am unclear how this is communicated to parents/pupils in schools to support their post-16 transition planning. As a school governor at Brune Park I am not aware of how the Policy Statement is promoted to families.
3	It appears unfair to our Post 16 students that they should pay for transport for education they are legally seen as needing when they may have had similar provision for over 10 years for free. Is a common policy across all the age groups not fairer
4	We cannot see anything different in the main statement, but what is included in the appendix about Peter Symonds College needs updating as we now only link with Stagecoach.
5	No comments on the current proposal, hoping my son will be able to use bus transport to brockenhurst
6	I think this is a fair policy statement.
7	Transport to college should be free for all students as it is for secondary schools
8	The existing policy statement is to support low income familys, and special needs there is nothing in place for The average family on approximately £35000.00/£40000.00 including overtime These are the families that are struggling with house hold bills, when you have two or more children in college this is even more pressure on the family finances if the overtime wasn't available we couldn't survive. When the government changed the length of education for 16 to 18 they should of put in place funding for travel for all.
9	Our children have had the option of taking A levels at the nearest college removed. My child has to travel 15 miles at least and we get no assistance with.
16	There are no local colleges offering A levels so wherever my daughter goes to college there is a charge for transport. Whilst I can afford the transport personally there are many families who cannot afford to pay it. I think the council should pay half the travel costs.
17	They are fine
18	Recently, the Government have made it law that all children up to the age of 18 must be in full time education. I believe that if there is no local provision and that children have to travel over three miles to reach their college, that should be paid for by the Government, not by parents. I believe that paying £600 a year for bus fares, to somewhere that is mandatory is unacceptable. For most people, paying this for each year they are at College and then the same for subsequent children is a huge amount of money. I believe transport to College should be paid for.
20	I am happy that my son currently gets free transport to and from the school of our preference. As a single mum I would struggle to pay for daily/weekly/termly transport.
22	All colleges need some form of transport to get to as not local or attached to secondary school. it is now a requirement for children to stay in education until 18
25	I have none
27	It is a sad reflection of the austerity measures that there isn't any funding for my daughter's transport to attend college. Her train ticket will cost me in the region of £1,000 per annum and it is fortunate that I am in a financial position to be able to cover this. It is discriminatory that less financially secure parents have to choose a college nearer to home, even though it might not offer the education opportunities they need for their child. There is no provision in Fareham for A levels. My daughter has no option but to travel to the nearest college offering A levels. It is unfair that there is a lack of choice nearer to home.

29	I think it is disgusting that parents have to pay for the children to travel to do a levels when there is no a level provision in the town that we live. £500 is not affordable for a lot of parents and discriminates heavily against parents that can least afford it
32	The existing policy is very unfair. The government changed the law so all pupils have to stay in education until they are 18. I live in Fleet & none of the local schools can offer pupils education past year 11, age 16. If they cannot provide post 16 education in the local area, then they should provide transport for the pupils to get there.
34	I am very pleased that this issue is under consultation.
35	The policy doesn't allow for students, with medical conditions, who can only attend part-time. This should not be something that a parent/student has to go to appeal for when there is a clear medical need. The fees also are not pro-rata for a student only attending part-time. In this case one day per week instead of the usual 4-5 for a full-time student. The policy of sharing taxis, and waiting for up to two hours for another student, can be detrimental to some health conditions. Again this should be allowed to be changed where there is a clear need and not have to be appealed for after the initial application. In fact partly due to this policy my child's health deteriorated to the point she had to leave college (Y12) after just 6 weeks. Of this 6 weeks she had managed 4 weeks attendance. My child has not attended full-time since Y10, child is now Y13. Both of the above needs apply to my child. For a student with autism not being able to have the same driver, except for sickness and holidays, is very important. Yet at 16+ there is no policy to guarantee this. Having a different driver and car turn up for every journey causes additional anxiety and stress. This exacerbates the other health conditions my child has! I feel it is unnecessary for an annual application to be made. This also costs £40+ (GP charge for signature) per year due to needing medical evidence of needs which don't/haven't changed in the last four years for my child. Perhaps an annual Declaration of Needs with tick boxes of No Change or Change would suffice.
37	It is compulsory for my daughter to attend further education and as we don't have any 6th forms near I feel it should be funded. She currently walks to school. When I attended the college in 1989/90 coaches were put on for no cost, when and why did this change? I thought if it was further than 3 miles it was paid for.
39	There is no provision for post-16 education in Fleet so there should be low cost travel options - at the moment they are very expensive. I know a lot of people think it should be free, I don't think that's realistic in the current economic climate, but Surrey students do get a discount, so it is unjust that Hampshire students do not. At the very least, those over 16 in full-time education should be treated the same as those under 16, so able to pay a reduced fare etc. Hampshire should be able to work with South West Trains and Stagecoach and other bus companies to achieve this.
40	I think its fine. I think we should support children with disabilities to attend mainstream schools (if they can) its a really important way to make them feel included. I do not support extending the support to low income families - I think they get enough support through the benefits system which effectively levels them with 'medium' income families but I also think its dangerous to focus on gross income only; many medium - high income families have to take on additional costs (such as elder care) which again low income families do not have to cover but which again, begin to equate the net income position between these families.
42	In Hart there are far to few services that serve youngsters. Fleet, Crookham Hook and Odiham have just 1 or 2 buses. The Blackwater Valley Rushmoor services should be encouraged to spread West and cross division lines need to be addressed.

43	I believe all children should have free or subsidised travel to and from college/sixth form due to it being a national requirement that they attend
44	I believe that the council should be held accountable for the poor bus service in Fleet. I use the bus service daily and am always late to college, and often late home as the buses never show up. The quality of the buses is poor, they are often left dirty with food wrappers, chewing gum and mold in the buses. They are always over crowded and the cost of the buses is outrageous at £590 per year.
45	As there are no post-16 school/ colleges in Fleet, it's disgraceful under 18's have to pay for transportation.
46	No assistance available for those on a low income unless in receipt of certain benefits yet children must attend post 16 education and it is not available anywhere in Fleet - so it is not that we are choosing not to use it, it is simply not available. £650 per child per year is extremely difficult for a lower income family with 4 children to meet, and yet if we lived elsewhere we would be entitled to some subsidy.
47	Fleet does not have education available post 16, therefore all students have to travel, which with 2 children soon to be attending is very expensive. The bus service is inadequate and the train, expensive but more flexible to fit in around college. All children having to travel this distance to compulsory education should receive free bus and train travel. The college is not in walking distance so this is not a viable option.
49	n/a
50	Way too expensive, cycling is a better option
51	There is no subsidy for post 16 transport. It is compulsory to stay in education until 18 & no facilities in Fleet & therefore the students have to travel!
52	As the parent of a child currently in secondary school education, in a town that has no provision for education post 16 I am appalled that there is no support for the travel costs incurred by our children.
53	Statement is in words only as actions by supplier or services contravenes the statement' and councils intentions. As it currently stands not fit for purpose in terms of the service provided.
54	Seems fair to me. Parents bear the cost of travel unless disability is involved.
55	As children are now required to stay in full time education until 18, and as there is no sixth form provision in fleet, it is unfair to expect families to find £640/year for a bus pass. This is a huge amount of money that we just don't have and we are not entitled to benefits. Finding this money puts us at risk of being unable to pay our mortgage or bills each month.
58	I feel that as there is no provision for further education in Fleet, it is unfair that parents must pay such a large amount of money for transport where children in other towns are able to make their way to college by foot or bike. As it is now a requirement that all children continue in some form of education/apprenticeship, we should not be penalised for the fact that Hampshire does not build 6th form into their schools in line with most other counties in the U.K. £570 is a huge amount of money for us to find, we simple can't afford it.
63	Happy with Policy
64	see below
65	Surely if children are to be encouraged to go on in further education they shouldn't be penalised because they live too far from the nearest provider. Neither of the Fleet schools are permitted a 6th Form so the Fleet children have no alternative than to travel on public transport which cost £500 plus per year.
66	Our son's final choice of college will probably be determined by the ease of access. For example, he has applied to one college that only has a bus once a day to and from college. He would prefer to be able to travel as and when he needs to, and other colleges have more flexible transport networks.

67	As pupils of Calthorpe Park School, my twins do not have a 6th form they can attend as their secondary school ends in Year 11. However, they must stay in education for 2 years post 16. From our house to Farnborough 6th form is over 6 miles. Why are the transport to college charges so very high? I have twins so I need to pay twice and they are not subsidised in Hampshire, only if we live in Surrey which in some cases can be nearer. It seems very unfair that other counties subsidise travel but as we live in Hampshire we pay full price. The children do not wish to travel all over the area, just to get to college. Why cant we have a bus pass for just the journey to a compulsory college? We have no option but to send the children to college. Not very happy of Fleet.
69	Due to both parents working we have never had any discounted or bus pass for school and now sixth form. Also having to pay full adult price return daily from aged 14 due to son being tall and not looking 14 years. Thanks so much
70	unclear on transport available for tech
71	Support given to parents/students from low income families towards the cost of transport is required so that students from this group are not disadvantaged compared to their better off peers.
72	I have paid for my daughter to attend college using the train, then her own car for the past two years. I will do the same for my son who starts in September 2017. I don't understand what you are trying to get from this survey? I pay for their train fare because I have to, I would expect help in funding this if my income meant that I couldn't afford it otherwise, but as I can I have no issue with that.
75	It is now more or less compulsory for students to remain in full time education to age 18. Therefore the county council should provide the same assistance as it does for pupils up to age 16. School transport policy could be considerably simplified by removing the differentiation between pre and post age 16.
76	the who what now? idk what that is
77	I have no comments to make about the existing policy.
79	As i am 16 now i have to pay the adult price on public transportation such as the train, this is double the price of the childs ticket. I believe that there should be a discount whilst in education which should also be available for students whilst still in secondary school. For example, I am still in year 11 and have to pay full adult price as I am 16, there should be a discount if you can prove you are in education. I know Peter Symonds has a deal with South West Trains but i have wait until i attend there to get that discount, there is nothing in place for me whilst i am still in secondary school.
80	Good as supports those who need it most.
83	Everything appears in order.
87	it's chill
90	I walk so it doesn't affect me very much
91	its smart
93	I think that it is good - it would be too expensive to provide transport for everybody and the right area is being targeted in my opinion.
95	its lit
96	I think that it is fair
97	-
99	I think that it's fair
102	I have no opinion
104	Buses never arive on time
106	N/A
107	N/A

108	N/A
119	I dont know any
123	N/A :)
129	idk what that is sooooo?
132	My concern is about the parental contribution of 570 even for those yp with SEN and continuing at their existing school sixth form provision. I am on a low income but as i receive working tax credit i do not qualify for help from HCC with this, my son's school does not offer the 16-19 bursary and so i am at a disadvantage as my son is unable to attend another institution which operates the 16-19 bursary. My daughter without SEN was able to attend college and access a full bursary which meant i did not need to pay any travel costs, but because my son is limited in his further education choices due to his needs we are further penalized by your transport policy. I believe all young people with SEN who continue their post 16 education at their current school should receive free transport as part of their EHCP. My son is unable to access either our local college or public transport without a full 1:1 carer. I feel your policy is short sighted and your sweeping generalization about the 16-19 bursary fund does not apply to many high need children with SEN who will remain at school rather than progressing to a college.
134	Appears clearly, broken down into relevant sections. Summarises information well with good detail. Helpfully contains the links to websites as well as email addresses etc. I know of some people that likely would be eligible for disability help, but meeting criteria and assessments are generally considered more hassle than it is worth
139	.
143	n/a
153	Why is the travel cost so expensive? Students cannot do A levels in fareham hants , no provision so have to travel out of town to other towns where the colleges are. So should get more financial help not just for low income students.
154	Transport for my daughters to the colleges they go to is adequate.
156	Existing policy seems sound, support should be provided for those with special needs, with charges based on ability to pay. I would like to see something in the policy about transport for those who are not special needs - it shouldn't be provided by HCC, but HCC should work with educational establishments and with transport providers to get a better deal for students
158	If children are required by law to stay on in education until 18 why do we as parents have to pay for transport if the closest college is more than 3 miles away? Free transport is provided for school why not poat 16?

case	Please list any post-16 travel issues in your area here:
1	The number 18 Blue Star service is very helpful to us at Itchen because it enables students to travel from the Millbrook area to Itchen on one bus. The First network is of very limited use to us because most students would need to change buses to travel from the west side of the city to Itchen and the area to the east of the city
2	There are minimal services at the start and end of the teaching day to and from Gosport Town Centre from the western region of Fareham and the Alverstoke/Leeson-Solent region. This makes progression to our college less attractive for some pupils.
3	None of our young people would be able to travel independently - in all cases adult accompaniment and supervision is a safety requirement
4	While we are able to help students from low income households from the discretionary support funds allocated to us, the real issue for our students is the withdrawal of HCC subsidies to local bus companies to keep routes going. Our students travel from a wide area and we work closely with Stagecoach to ensure a service for our students. In the past, subsidies have been withdrawn mid year and hence routes withdrawn mid year, causing huge difficulties.
5	Infrequent buses from Marchwood
6	I do not have any concerns to raise.
7	Apart from Barton Peverill and Brockenhurst there is no public bus service to any colleges which limits their choice of where to go
8	So far with the information I have the bus stop is miles away from the house. I need to look into this when we have the next meeting in college. But the real issue is cost of travel to a college that supports a course that the student wants to study.
9	Very expensive and no direct transport.
10	We pay over £500 a year to travel the few miles to Totton and the pass includes use of transport in Southampton anytime yet Bartley has lost its bus service other than two days a week yet no reduction in cost. Very expensive service
11	The trains and busses are both very expensive and unreliable.
12	The pavements around the college (within a 1 km radius) are not kept clear of vegetation to allow the very large numbers of students who walk to college from all directions (including the station), when such large numbers of students are walking at the peak times this vegetation is obstructive and may occasionally cause students to walk in the road, causing a road safety issue. For instance; the pavements along the A325 Farnborough Road, Prospect Avenue and Sand Hill Road (near the Farnborough Football Ground)..
14	Lack of direct route from Romsey/North Baddesley to our site in Hill Lane making it less attractive for students wishing to come here from that area.
15	Busses are generally late, across the county, bus drivers are quite rude to our age range. The timetables are too restrictive to allow for varying traffic conditions.
17	Buses do not always turn up to their allocated bus stops at the scheduled time of arrival causing distress in students going to and from college. This is particularly concerning during assessment and exam time as a late arrival can result in being disqualified from sitting their paper.
18	The bus to Farnborough Sixth Form, to reach college by the desired 9.00 am start, from Church Crookham is often full. Cycling is a dangerous option as the roads are very busy and there are no complete cycle paths.
19	RMT trains are poor, they always seem to be on strike and it makes me very late for college and work. Stagecoach buses (69) are usually late and only come sporadically. First bus X5 is frequently late or fails to turn up multiple times in a row. One train an hour from Southampton to Portsmouth is not enough.

21	There needs to be a lunchtime bus going to Yateley again (408 or 8) because it takes an hour just to get from college to Yateley with the buses 1 and 3. The buses tend to be quite busy and there needs to be more consistency with punctuality.
22	Very expensive to commute when required to attend small village but with train and bus service with huge financial burden
23	Living on hayling, buses are just too expensive . South Downs is horrible to get to. Traffic there is mad. It is too dangerous to cross as a pedestrian the roundabout at B & Q, the main road up the hill from the motorway towards South Downs. All that work on that roundabout at B&Q and nothing for easing access to South Downs; cars or pedestrians My daughter has chosen havant. We are just outside the free bus mileage limits. it is cheaper to drive her than for her to get the bus. Traffic off hayling is horrible in the rush hour. If buses were more affordable we would use them . I am on and off hayling like a yoyo four times a day for school/college. It takes over an hour and a half from our house to Southdowns on the bus or 20 mins in the car... It's a no brainer.
24	The first bus service running to and from Whiteley to the college only runs every two hours. This leaves my daughter having to wait around for sometimes just under two hours or has to leave ridiculously early to get for the start of the college day. We paid for a bus pass but it's mostly wasted as we end up having to s l've her in or pick her up. This is a general problem for Whiteley that is not being addressed.
25	I have none
26	There is no direct bus link from our area To Highbury college my child would have to take three buses and leave at a ridiculous time of the morning to get there costing a fortune and this would have a knock on effect with his performance at college as will be extremely tired throughout day before heading back using once again three buses
27	No subsidies from the train companies, despite my daughter being in fulltime education, because she is travelling before 9am. I think this is something which the council should be negotiating.
28	As children now have to stay in education after year 11 I feel there should be further subsidy of travel fees. Whilst it is our daughters choice to go to Peter Symonds all further education sites result in travel expenses. I strongly feel that the age for adult train tickets should be increased to 18 rather than 16 years.
29	as above
30	cost of buses is extortionate and not always easy for some families to pay with out the help from other family members
31	there is very limited facilities for yougsters going to college from Fleet, wether you are going to Farnborough or odiahm or alton or basingstoke, you have to travel either by train or bus which is expensive. if the children do not have classes later on or start later in the day it can be hard for them to get in on time and they have to hang around alot
32	There are no schools within the local area which support learning post 16. It is unfair to expect the parents to pay large amounts of money for bus or train fares just because the local area cannot provide them with the education the state says they have to have until they're 18!
33	As the local Fleet schools offer no sixth form education it is necessary to travel out of the area - as it is now mandatory for students to be in higher education until they are 18 (or go onto apprenticeships) I feel some assistance with additional travel costs should be available. The bus routes/pick-ups are reduced meaning that there is an extra travel element for students just reaching the nearest bus stop in the first instance!

34	The fact the government requires all 16-18 year olds to be in full time education and training but give no assistance to those who travel is very irritating. The cost of trains is upwards of £80 a month - something I know I cannot afford when my son starts Farnborough 6th Form College in September. Due to the time of travel to get to college for an early start a student railcard cannot be used. Students pay the same as business people travelling peak hours to London. The bus pass for college - unirider - is also expensive - approx £50 a month. Also this doesn't cover travel for the summer holidays so while it is an annual pass it's not for the whole year. Some sort of subsidised train fare along the lines of Surrey council's subsidy would be a good start. I also have a younger son who is likely to travel to Farnborough in a few years time so this is an important issue for us as a family. I am a single parent and realise that of course travel needs to be paid for, but for students who are not yet in work and their families to shoulder the financial burden of full price fares is unfair.
35	There is no 6th Form college in Fleet. College choices can be limited by the transport options available. The limited buses in Fleet and Church Crookham don't seem to tie in with the train timetables at Fleet. So if you need to change you'll have a long wait for the next train/bus. I've seen empty in-service buses pull in to the station bus stop only to leave moments before a full train arrives!
36	There is no bus from Fleet which enables my daughter to get to Merrist Wood College by 9am.
37	Buses are not always reliable
38	Not enough buses to Farnborough to get to college
40	I think there should be easier/subsidised parking for students who car pool - this is a great behaviour/attitude to develop now at a young age. We have some new (ish) estates in Lee on Solent which are largely un-served by buses. Slightly amended bus routes would also help.
41	My son cycles to Bay House every day from Stubbington, cycle lanes are generally good, but he has had many punctures due to broken glass on the cycle ways, any help in clearing cycle ways of broken glass would be appreciated.
42	There is a lack of public transport on buses. The few routes that remain in Hart are infrequent (hourly or twice an hour) and a 20 minute service is needed. Routes should be shorter and integrated to form a wider network, with trains buses and community transport included.
43	Not enough special buses to transport children to colleges outside the Fareham and Gosport area in which there is very little provision within these two boroughs for a level studies (i.e. To Barton Pevern, South Downs)
44	I believe the council should fine the bus company for every bus that is late, as I have had to wait for two hours in the rain for a bus many times. The cost of the buses should be subsidized for 6th form students as we are paying £590 per year to sit on a dirty, late, and hot bus whilst having to be diverted by road works. When I have tried to complain about the buses I have received no response on numerous occasions. So far I have never been on a on time bus apart from the 410 which is always on time and I believe that the two main drivers of the 410 should be rewarded as they are the most polite and helpful bus driver of them all. I believe the students should be consulted on the issue of the buses as they are the ones who use this bus service the most and who are having to go through the discomfort of travelling on a late and overprice bus.
45	Limited Buses
46	No post 16 education available in Fleet at all. No discounted travel on trains or buses for those using these options to get to college (i.e the only options....)

47	Poor bus service Expensive train service No post 16 education available in fleet therefore forced to pay for travel Travel should be free or the very least heavily subsidised for compulsory education where students have to travel.
48	There are no provisions for post 16 students in this area to carry on full time education without travelling. As it is law now to be educated until 18 why should we foot the bill for transporting them there, especially when a lot of parents have other children in primary school.
49	Buses are too expensive
50	Busses are normally late
51	The cost is too high for students to travel. The buses are unreliable & several times a week my child is either having to catch a bus an hour earlier or is late for college. The live time table the buses disappear & suddenly merge with another bus. When i've telephoned the depot to find out where buses are they say check on twitter! The drivers are rude & it is expensive. Surrey subsidise travel for there students Hampshire does nothing!
52	Our children do not choose to travel out of their home town to attend college, they have no choice as there is no post 16 education available within Fleet. It is a legal requirement for them to remain in education so I cannot understand how it is not a legal requirement for the education authority to provide a school / or college within reasonable distance and if not they should have to provide free transport to the closest school.
53	Unreliable bus service which daily and on more than one occasion fails to arrive or is 20+ mins late
54	None I am aware of. The college liaises well with the local bus company (First)
55	Buses home from college in the afternoon are unreliable. My son has waited for over an hour on some occasions for a bus that just hasn't arrived.
57	There is only one college bus provided from Whiteley to CEMAST which operates once in the morning and returns once at the end of the college day. This does not take into account that although college courses are described as full time they are invariably only part time in hours/days. I am unable to assist in helping my son get to and from college as i work full time (Monday - Friday 9-5pm) in Southampton. How are college students supposed to get home if they finish part the way through the day and the college bus only runs at 7.20am and returns appox 5pm. This is encouraging students to be 'hanging about' or staying at college when they could be working a part time job to fill the unfilled hours at college.
59	Youngest daughter is currently in her first year at 6th form; there are no colleges or provision for further education in Fleet meaning the nearest college is in Farnborough which is 5.9 miles from our home address. At present we are paying for a weekly bus pass with Stagecoach at a cost of £17.80 per week, the train fare would work out cheaper but it is not practical to get my daughter to and from Fleet train station. I feel that as further education is now compulsory for under 18's then there should be a financial contribution towards travel costs or at least subsidised travel.
60	I think it is unfair that at 16 years old, it is compulsory for me to go to college and that my parents have to pay £20 a week to get to college and it is 6 miles away. it is too far for me to walk and I have to use public transport as my parents work full time. Also, the buses are always late sometimes even upto an hour and you cannot expect us to stand in the cold for ages waiting for the bus each day.
61	Bus fares have an extortinate rise

62	Trains are overcrowded, my child needs to sit down for medical reasons and there are never any seats. The pass does not cover half term holidays or breaks where revision or access to college is permitted. Yet the bus pass does. Does not seem fair. Why has Hants County council not negotiated. A better deal with South west trains.
63	The bus is unreliable. Several times I have had to drive my daughter to school as the bus either hasn't turned up, or is running very late. On an occasion the bus driver actually drove past the students waiting at the stop shaking her head rudely. The bus only had a few passengers, the driver was already late and obviously didn't want to stop! I hve emailed the bus company at least three time to complain. I always get the response that they have spoken to the driver or tracked the GPS and my complaint is not valid. WHY would I make this up or lie???? Fortunately my daughter can now drive and gets to college on time. I only purchased a bus pass from September - December. Although there is a discount from the school the price is extreme when I also had to pay for petrol to drive my daughter to school when the bus wasn't reliable, I also lost pay at work for turning up late on several occasions when I was forced to drive her.
64	used to have bus pass each term that saved money when compared to daily rate but since this academic year price increased greatly, need bus transport so have to pay. Emsworth and District
65	It is virtually impossible for my 17 year old Son to walk safely from Farnborough 6th form college to home as there isn't a path along Fleet/Cove road.
66	I am unaware of any specific issues as yet. My son is in year 11 and so we had not started investigating transport to 6th form fully. I do know that the bus that used to pass close to our house no longer runs but there is another route fairly close.
68	NEGOTIATED BUS PASSES ARE ESSENTIAL FOR THOSE STUDENTS WHO ARE NOT ELIGIBLE FOR ANY ASSISTANCE. THE COST OF SUPPORT BEING SUGGESTED SEEMS HIGH IN COMPARISON TO THE DISCOUNTED PRICES MOST COLLEGES SEEM TO BE ABLE TO OBTAIN SO WOULD APPEAR TO OFFER GOOD VALUE. PREHAPS THOSE STUDENTS WHO NEED SUPPORT ARE LIMITED TO THE PRICE OF DISCOUNTED BUS PASSES UNLESS THEY NEED SPECIFIC TRANSPORT AND NOT PUBLIC TRANSPORT.
69	Poor us access in morning due to buses being overcrowded, therefore easier to walk to cosham to catch a bus to enable space and actually get on the bus
70	not clear where to get transport for farnborough tech from to get there and home again
71	Dire and appalling lack of public transport in this area generally.
73	I feel that students wishing to continue education at Oakands are at a disadvantage as bus passes to other collages are cheaper with the uni rider the same bus company charges a far higher rate for students traveling to oaklands.
76	no buses from my village to literally anywhere
77	While the colleges are quite close, there are no buses that go directly to college and instead I am required to pay per year to have a bus pass
78	16 year olds who aren't at college yet have to pay full price ratehr than a child or student price.
79	The trains are really crowdod between Eastleigh and Winchester before and after school, there should be more trains running in this area at peak times.
83	N/A
84	Bus passes for transport to Symonmds on the public busses are very expensive, and it may be hard for some families to afford this.
87	Don't get me started mate

90	-
91	none
93	N/A
95	there aint none i can fink of innit
96	Bus prices and train prices are very high as at 16 we are classed as adults, however we are still in education and the majority do not have full time jobs. As a result half an hours wage for one single ticket into town is too high.
97	-
99	Bus and train prices are really high, which can make it hard for young people to access public transport. This can make it hard for young people to get out without parental assistance. In addition to this, 16 year olds are classed as adults when purchasing tickets, as opposed to students. As we are in full-time education it's hard to find jobs which pay enough/with enough hours to be able to consistently use public transport.
102	I don't know
104	buses are very inconsistent on their arrival times and the digital displays at bus stops do not accurately predict their time.
106	It's much too expensive and specifically the bus routes, are not frequent enough. Also, at 16 you have to pay for an adult ticket when you are most likely not making any money which doesn't make sense. The buses in Colden Common are never on time which makes using them difficult.
107	Buses are too expensive, student discount on route to school please(or certian time in day e.g. 7:00 till 8:30 morning discount/free)
108	As a 16 year old I will have to pay for a adult ticket even though I will not most likely be at a working wage in the next year to sufficiently pay for travel, should the need be becoming me. And although I will just cycle or walk I feel that it could be dissuading teenagers from public transport / or actually leaving the house. So I would prefer it to make the price more affordable.
117	public transport too expensive
118	Buses are too expensive
120	Road conditions are poor, too many houses being built
121	it is too expensive for me, as a student to be paying for my bus and train tickets to most places.
123	N/A
127	I have a sister that travels to peter symonds college everyday and the bus she gets is majorily fullled up when it gets to her.
128	Late buses
129	Bad roads
130	have to pay adult tickets when you're sixteen for travel
131	people at 16 should not have to pay full priced tickets as many still do not have their own income
132	Limited bus service that can get YP to college in Farnborough but difficult to get to railway station to get to anywhere else either in Hampshire or just over the borders. Young People with SEN are seriously disadvantaged by the lack of direct transport provision in Yateley. It is not easy to travel train when they need to negotiate multiple bus or train changes, there is also the issue in terms of buses getting caught in traffic and being late this is a huge difficulty for YP with SEN and impacts on their confidence to travel alone. It is a logistical nightmare if my son needed to get to his school by public transport, the 12 mile car journey would take an hour and a half and involve a bus from Yateley to Blackwater then a train to Reading and then a bus to the school site. This journey is just a sample of the difficulties our young

	people face.
134	Overcrowding on main buses used by students: As the nature of the colleges in Fareham and Gosport boroughs are limited, many students wishing to pursue A-Levels opt to travel to Bayhouse rather than travel to Southampton (and further) or towards Havant and Waterlooville. This means, primarily from those travelling down from Fareham and the north-end of Gosport, that buses become quickly crowded and run out of space for those getting on at later stops. This commonly results in late - although the bus service has improved recently. Maybe a bit far fetched, but for those of us seeking extra-curricular activities outside of the classroom to enhance university applications and such, travelling at the weekends or during our term breaks is not covered by the discounted but still expensive bus pass at Bayhouse. Furthermore, the Gosport Ferry offers no student pricing (as far as I am aware) and holding down jobs on low minimum wage or volunteer positions over in Portsmouth does become expensive, especially for those of us that do not have a large disposable income. And Portsmouth has far more opportunities than Gosport does. Road safety! Driving I have almost hit so many children! It is actually ridiculous and it frustrates me so much! I know many residents get fed up with it too, and whilst not a direct 'travel issue' perhaps, there needs to be more funding into getting those little idiot's heads screwed on or someone is going to end up hurt in the end
137	busses should come more often
139	Car, walk or take a local bus
140	By Car, and Local bus.
143	n/a
145	I would walk or take the train
150	walking to school
151	bus
152	Buses unreliable/late.
153	Provision is ok by xelebus but very early 7.14 am ,has to be to get through traffic . My child could go by train but her college offers no subsidy towards train travel and the student railcard cannot be used before 10am so hopeless. So have to use the bus as a cheaper option. The bus pass is £560. Other college buses are alot cheaper eg if go to Itchen college £199 so seems unfair when a similar distance .
156	We live in Fareham, where there is no provision for A Level students (ridiculous in itself), so my son has no option but to travel. Options are Winchester, Eastleigh, Gosport, Southampton, Portsmouth or Havant. My son attends Bay House in Gosport, so no rail route, and it's too far by bike with all the books students have to carry, so he goes by bus. The termly ticket available to students is expensive, so I would like to see HCC work with the provider and with the college to get a better deal for students - heavier discounts to reflect the fact that the students will be using the bus every day and are providing a steady revenue stream for the provider.
157	I feel that ALL students in Fleet ought to have more help with travel costs, especially now that it is compulsory for them to stay in education beyond 16. There is no provision for any further education within the town so 400+ students each year have to travel elsewhere to continue their studies. It could be a discount on travel which I believe Surrey provide to their students attending the Sixth Form College in Farnborough.

This page is intentionally left blank

HAMPSHIRE COUNTY COUNCIL

Decision Report

Decision Maker:	Executive Member for Education
Date:	19 June 2017
Title:	Mill Chase Secondary School – 6 FE New Build
Report From:	Director of Culture, Communities and Business Services

Contact names: Steve Clow and Bob Wallbridge

Tel: 01962 847858 **Email:** steve.clow@hants.gov.uk
01962 847894 bob.wallbridge@hants.gov.uk

1. Executive Summary

- 1.1. This report seeks approval to the project proposals for the relocation of a secondary school in Bordon at an estimated total cost of £29,990,000.
- 1.2. The purpose of this paper is also to obtain spend and procurement approval for contracting activity associated with the project.
- 1.3. This project is required to provide a replacement school, on the Budds Lane site, in relation to the Whitehill and Bordon Regeneration Project.
- 1.4. Executive Member approval has been given at Executive Member Policy and Resources meeting on 9 November 2016 for acquisition of the freehold interest in the Budds Lane site from the Ministry of Defence (MOD) and surrender of Hampshire County Council's (HCC) freehold interest in the existing Mill Chase Academy.
- 1.5. This project is a significant investment in education facilities in the town which will make a major contribution to its regeneration following the departure of the MOD in recent years. The County Council has taken leading roles in the provision of a new high quality school building and delivering the additional road infrastructure. It has also actively supported the strategic planning of the town alongside public and private sector partners. A one-off capital contribution of £10 million has been made, on an exceptional basis, to ensure the scale and quality of the building and its landscape demonstrates the positive commitment the Council is making to this community.

2. Scope of Work

- 2.1. It is proposed to provide a new 6 Form of Entry (FE), Secondary School to cater for a maximum of 900 pupils aged 11 to 16 years, with associated external facilities.
- 2.2. The proposals are to relocate the existing Mill Chase Academy, Mill Chase Road, Bordon into a new replacement building off Budds Lane. The proposed school has been designed with the required infrastructure for a

future planned expansion of a further 2FE to a total of 8FE with a capacity for 1200 pupils.

3. Contextual Information

- 3.1. The school will serve the existing catchment area within Whitehill and Bordon, the surrounding villages as well as the ongoing and future residential developments in the town. The proposals form part of the wider Masterplan for Whitehill and Bordon and the proposed school site was identified and agreed with the local planning authority, developer and land owner. Future development proposals include a further 2400 homes, and the relocation of the town centre.
- 3.2. The proposed new secondary school buildings and site will relocate the existing Mill Chase Academy, which is sponsored by the University of Chichester Academy Trust.
- 3.3. The design principles for the new school have been developed in close liaison with the University of Chichester Academy Trust (UCAT), the existing Mill Chase Academy School (MCAS) and officers from Hampshire County Council Children's Services department.
- 3.4. Kier Construction were appointed to the pre-construction stages of the project following a mini-competition to the Southern Construction Framework in July 2016. It is anticipated that the elemental construction packages will be procured over the summer with works commencing on site during the Autumn 2017 and completing during the Summer 2019.
- 3.5. The proposed all weather sports facilities are to be procured separately through the Landscape Contracting Framework which will secure best value for the County Council. This package forms a discrete element of works to the main construction site. The funding and delivery programme is contained within the overall project.
- 3.6. Construction access to the site will be provided for the contractor to the school site off Budds Lane. The contractor's compound will be located adjacent to the proposed development. A second construction access, for the all weather sports pitch contract, is to be provided to the north of the site from Station Road.
- 3.7. A planning application for the relocation of the Mill Chase academy was submitted to in February 2017 and is due to be determined in Summer 2017.

4. Finance

4.1. Capital Expenditure:

Funding for the project of £29,490,000 was approved at the Executive Lead Member for Children's Services Decision Day on 17 January 2017 and this report outlines the available budget from within which the project must be designed and delivered. In line with the rest of the Children's Services Capital Programme, an inflationary uplift has been applied to the anticipated Developer Contributions.

The following tables outline the breakdown of its distribution across the project:

Capital Expenditure	Current Estimate	Capital Programme
	£'000	£'000
Buildings	25,614	25,313
Fees	4,376	4,177
	29,990*	29,490*

* The means by which the difference between the Current Estimate and the Capital Programme allocation is to be met are shown in the table below:

4.2. Sources of Funding:

Financial Provision for Total Scheme	Buildings	Fees	Total Cost
	£'000	£'000	£'000
1. From Own Resources			
a) Capital Programme (as above)	8,584	1,416	10,000
2. From Other Resources			
a) Developer's Contribution	10,624	1,903	12,527
b) East Hants District Council	629	104	733
c) Education Funding & Skills Agency (PSBP2).	5,777	953	6,730
Total	25,614	4,376	29,990

a) *Building Cost:*

Net Cost = £2,448 per m²

Gross Cost = £3,160 per m²

b) *Furniture & Equipment:*

Included in the above figures is an allocation of approximately £804,000 for the provision of loose furniture, fittings, equipment and I.T. (inclusive of fees). It is intended that the new furniture and equipment be supplemented with furniture, fittings and equipment being moved from the existing Mill Chase Academy.

c) *School Balances:*

The school has the following level of balances:

Published revenue balance as at 31 March 2017: n/a – Academy

Devolved capital as at 31 March 2017: n/a - Academy

4.3. Revenue Issues:

a) *Overview of Revenue Implications:*

	(a) Employees £'000	(b) Other £'000	(a+b) *Net Current Expenditure £'000	(c) Capital Charges £'000	(a + b + c) Total Net Expenditure £'000
Revenue Implications Additional + / Reductions	0	0	0	1,641	1,641

b) *Energy Consumption:*

The estimated annual energy consumption for the new accommodation will meet that required by current Building Regulations.

5. Risk & Impact Issues

5.1. Please see Appendix B for a summary of the risk and impact issues considered in relation to the design of this project.

6. Details of site and existing Infrastructure

- 6.1. The proposed site is currently used as a public recreation ground and is to the north of Budds Lane, Bordon, adjacent to the existing Bordon Infant and Junior School. Part of the recreation ground site is being retained by Whitehill and Bordon Regeneration Company (WBRC) for future development.
- 6.2. The existing site is mainly laid out as sports pitches. Located in the centre of the site is a hard play area with a skateboard park. This will be relocated by WBRC to the adjoining site to the west.
- 6.3. The east side of the site is occupied by the former Garrison's Football ground – The Daly Ground. The grandstand and changing rooms have been demolished by the WBRC however it is intended that the floodlighting will be retained.
- 6.4. The site is bordered by mature mixed woodland. Tree clearance, demolition of the existing buildings and other mitigation work will be completed prior to the site ownership being transferred to Hampshire County Council in the Summer 2017.

6.5. New mains temporary and permanent utility services for the construction and completed building will be connected to the existing services along Budds Lane. The proposed foul water drainage will be connected to an existing sewer that crosses the site. Surface water drainage will be attenuated on site utilising sustainable drainage features. Required consent and work will be carried out by WBRC prior to the site transferring to HCC ownership under the Section 106 Agreement.

7. Scope of the Project

7.1. The construction of the new Mill Chase Academy Secondary School will include:

- 22 general classrooms
- 7 science classrooms
- Design Technology classrooms
- Special Educational Needs (SEN)/Resource Provision teaching spaces
- Music and drama classrooms and recital spaces
- Drama studio
- LRC and adjacent ICT classrooms
- 2 art rooms with 3 adjacent classrooms
- 2 pastoral care spaces
- 2 conference rooms
- Staff room, PPA space, offices and workspaces
- Administration offices
- Pupil and staff toilets
- Accessible toilets and hygiene room
- Ancillary support facilities such as plant rooms, storage and caretaker's room

7.2 The school will also provide the following accommodation for extended use by the community:

- Assembly hall with provision for 2 badminton courts
- School entrance and reception space
- External sports pitches, synthetic turf pitch (STP) and Multi-use-games-area (MUGA)
- Sports hall with provision for 4 badminton courts, activity studio and changing rooms
- Dining room with adjacent kitchen

It is intended that the extended community use of the proposed school will be subject to the completion of a Community Use Agreement as required by the associated S106 Agreement for the development

8. The Proposed New School Buildings

- 8.1. The proposal is based upon a school campus model with a landscaped central court at the heart of the school. This is bounded by north and south teaching wings with an assembly hall and adjacent music and a drama faculty to the west end and sports hall with changing spaces and activity studio to the east end of the courtyard.
- 8.2. A key aspect of the design is to provide a welcoming and accessible school with an array of diverse teaching environments which are able to adapt to changing learning styles and meet the needs of all pupils. There is also a requirement to have a strong connection from the inside to outside to meet the ambition of the Academy Trust and school to teach outdoors and maximise the wider benefits of the site.
- 8.3. The proposals for the design of new school are intended to compliment key buildings of interest identified as important which are to be retained. These include various former garrison buildings and other key public buildings across Whitehill and Bordon and it is proposed to use a similar red brick construction for the new school buildings. Roofs will be finished with a high performance roofing system with aluminium windows and doors.
- 8.4. The school building configuration and classroom design have been developed to maximise daylight and offer views out to the surrounding woodland setting.
- 8.5. External canopies to the buildings will provide covered and safe access between buildings with external lighting to the car park and adjoining footpaths. This will be controlled to avoid disturbance to residents and ecology along the woodland margin.

9. External Works

- 9.1. The external landscape proposals at Mill Chase Academy Secondary School will include:
 - A Multi-Use Games Area (MUGA), with infrastructure for floodlights to be installed in the future, to the north of the site
 - A floodlit Synthetic Turf Pitch (STP) to the north of the site
 - A staff car park to the north west of the site
 - Covered and secure cycle storage in three locations
 - Separate covered cycle area with space for Powered Two Wheelers (PTW) in the staff car park
- 9.2. Five access points have been proposed around the boundary of the site for increased pedestrian and cyclist access. Footpaths along Budds Lane will enter the site at each corner to separate pedestrians and traffic movements on the school site.

- 9.3. The school car park is to be located to the west of the site to separate vehicle movements from pupils and take advantage of natural tree cover to minimise the visual impact from Budds Lane.
- 9.4. A one way traffic circulation system is proposed to the school frontage with single and separate points of access and egress of school bus and staff traffic. This will double up as a visitor and delivery parking area during the school day outside of the busy drop-off and pick-up times.
- 9.5. Access to the school beyond the secure line will be via intercom at the school's main reception.

10. Car Parking

- 10.1. The project will provide staff car parking on the school site which will be in line with the Hampshire County Council On-Site School Parking Guidelines (approved by the Executive Lead Member for Children's Services on 25 March 2013). There will be 84 car parking spaces provided for staff, 4 of which will be fully accessible.

11. Planning

- 11.1. A planning application was submitted on 06 February 2017.

12. Building Management

- 12.1. The new school building management arrangements will be managed by the University of Chichester Academy Trust.

13. Professional Resources

Architectural Design	- Culture, Communities & Business Services
Interior Design	- Culture, Communities & Business Services
Landscape	- Culture, Communities & Business Services
Mechanical & Electrical	- Culture, Communities & Business Services
Structural Engineering	- Culture, Communities & Business Services
Quantity Surveying	- Culture, Communities & Business Services
Principal Designer	- Culture, Communities & Business Services
Drainage	- Economy, Transport and Environment
Transport	- Economy, Transport and Environment

14. Consultations

- 14.1. The following have been consulted during the development of this project and feedback can be seen in overview in Appendix C:

Academy Principal
 Academy Senior Management Team
 University of Chichester Academy Trust
 Academy Governors
 Bordon Infant and Junior Schools
 Children's Services
 Executive Lead Member for Children's Services
 Whitehill and Bordon Development and Implementation Board

Whitehill and Bordon Strategy Board
National Energy Foundation
East Hants District Council
Local County Councillor
Local Town Council
Local Community Groups
Local Residents
Fire Officer
Access Officer
Planning Department
Crime Prevention Officer

15. Recommendations

- 15.1. That the Executive Member for Education gives approval to the project proposals for a new 6FE secondary school at Budds Lane, Bordon, at an estimated total cost of £29,990,000.
- 15.2. That the Executive Member for Education grants procurement and spend approval for contracting activity associated with the project as outlined in Section 3.4 and 3.5 of this report.

CORPORATE OR LEGAL INFORMATION:**Links to the Corporate Strategy**

Hampshire safer and more secure for all:	no
Corporate Improvement plan link number (if appropriate):	
Maximising well-being:	yes
Corporate Improvement plan link number (if appropriate):	
Enhancing our quality of place:	yes
Corporate Improvement plan link number (if appropriate):	

Other Significant Links

Links to previous Member decisions:		
<u>Title</u>	<u>Reference</u>	<u>Date</u>
Proposed Provision of a Replacement School for the Mill Chase Academy, Whitehill and Bordon	7786	09.11.2016
Direct links to specific legislation or Government Directives		
<u>Title</u>	<u>Date</u>	

Section 100 D - Local Government Act 1972 - background documents

The following documents discuss facts or matters on which this report, or an important part of it, is based and have been relied upon to a material extent in the preparation of this report. (NB: the list excludes published works and any documents which disclose exempt or confidential information as defined in the Act.)

<u>Document</u>	<u>Location</u>
None	

RISK & COMBINED IMPACT ASSESSMENT:

1. Equality Duty

1.1. The County Council has a duty under Section 149 of the Equality Act 2010 ('the Act') to have due regard in the exercise of its functions to the need to:

- Eliminate discrimination, harassment and victimisation and any other conduct prohibited under the Act;
- Advance equality of opportunity between persons who share a relevant protected characteristic (age, disability, gender reassignment, pregnancy and maternity, race, religion or belief, gender and sexual orientation) and those who do not share it;
- Foster good relations between persons who share a relevant protected characteristic and persons who do not share it.

Due regard in this context involves having due regard in particular to:

- a) The need to remove or minimise disadvantages suffered by persons sharing a relevant characteristic connected to that characteristic;
- b) Take steps to meet the needs of persons sharing a relevant protected characteristic different from the needs of persons who do not share it;
- c) Encourage persons sharing a relevant protected characteristic to participate in public life or in any other activity which participation by such persons is disproportionately low.

1.2. Equality Impact Assessment:

- a) The buildings and wider site will replace the existing outdated buildings and site creating a contemporary and diverse learning environment for the pupils using the school and for the wider community. The building has been designed to be open, transparent and accessible to the wider community.
- b) The building has been designed to be fully accessible and to comply with all current legislation and has been reviewed by the access team for Hampshire County Council.

Crime Prevention Issues:

2.1 The County Council has a legal obligation under Section 17 of the Crime and Disorder Act 1998 to consider the impact of all the decisions it makes on the prevention of crime and disorder in the County. The proposals in this report have no impact on the prevention of crime.

3. Fire Risk Assessment

- 3.1. Sprinkler systems shall be installed in new and refurbished buildings where appropriate, based upon a risk assessment methodology.
- 3.2. With respect to fire safety and property protection, the proposals have been risk assessed in line with the agreed procedures, and confirmed that the provision of sprinklers is not proposed in this instance. The building's management and maintenance is the responsibility of the Academy Trust. They will also insure the buildings independently against fire and other occurrences. The risk is different for the Council as it self-insures against damage by fire and flood given the scale of the total estate.
- 3.3. The proposals will meet the requirements of the Building Regulations (BB100 Fire Safety in Schools), including enhancements beyond minimum provision, and are consistent with current fire safety legislation, the partnership arrangement with Hampshire Fire and Rescue Services, and are in line with the County Council's policy to manage corporate risk.
- 3.4. The project proposals include the following fire safety and enhanced features:
 - Additional automatic fire protection, with full (24/7) remote monitoring.
 - External finishes specified as fire resistant.
 - Reduced fire compartment sizes.
 - Consideration of secure by design principles including specific site security, bin storage away from building, external lighting etc.

4. Health and Safety

- 4.1 Design risk assessments, pre-construction health & safety information and a Health & Safety File will be produced and initiated in accordance with the Construction Design and Management Regulations for the proposed scheme.
- 4.2 Local management arrangements will be put in place to manage the health and safety impact to all.

5. Climate Change:

- 5.1. The project will incorporate the following sustainability features:

A highly insulated building envelope, including high performance windows, doors and roof lights to reduce energy consumption.

A site waste management plan will be developed to ensure that during construction the principles of minimising waste are maintained.

Acoustic attenuation to allow natural ventilation.

Energy efficient lighting and heating controls, as each light fitting will be day-light linked with absence detection to ensure the minimum energy is used.

External lighting to provide safe access and emergency escape routes that will be carefully designed to prevent light pollution to avoid nuisance to residential properties.

Low water-consumption sanitary installations.

Natural ventilation to main spaces with night-time cooling strategy.

Provision of good levels of day lighting to all teaching areas to reduce the need for artificial lighting and energy use.

Solar controlled glass will be installed to south facing windows to assist in the control of solar gain.

Extended roof canopies and solar shading above large glazing areas to avoid summer time overheating.

The new building will include appropriately sized Photovoltaic Solar Panels.

The use of timber from sustainable sources.

FEEDBACK FROM CONSULTEES:**OTHER EXECUTIVE MEMBERS:**

Executive Member & Portfolio	Reason for Consultation	Date Consulted	Response:
Councillor Keith Mans, Executive Lead Member for Children's Services	Portfolio Holder		

OTHER FORMAL CONSULTEES:

Member/ Councillor	Reason for Consultation	Date Consulted	Response:
Councillor Adam Carew	Local Member for Whitehill, Bordon and Lindford	18.05.2017	Councillor Carew briefed 26.05.17 and is in support of the proposals.

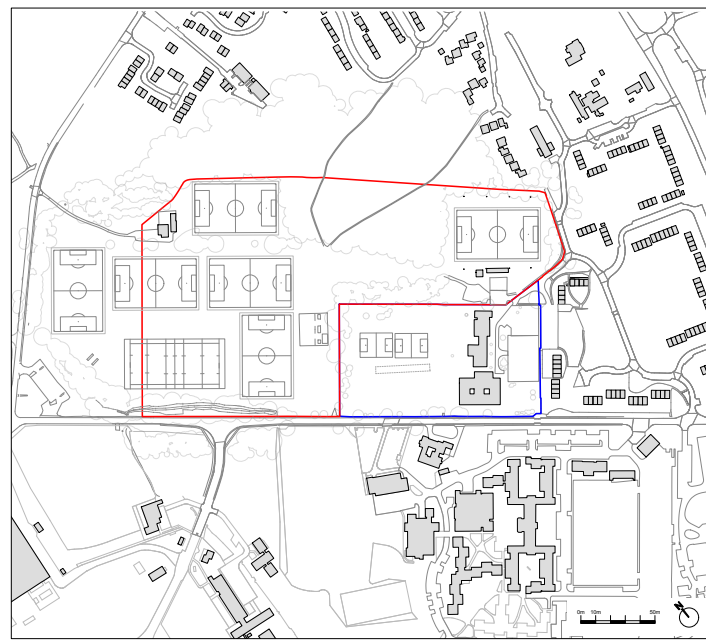
This page is intentionally left blank

Mill Chase Academy Secondary School Bordon

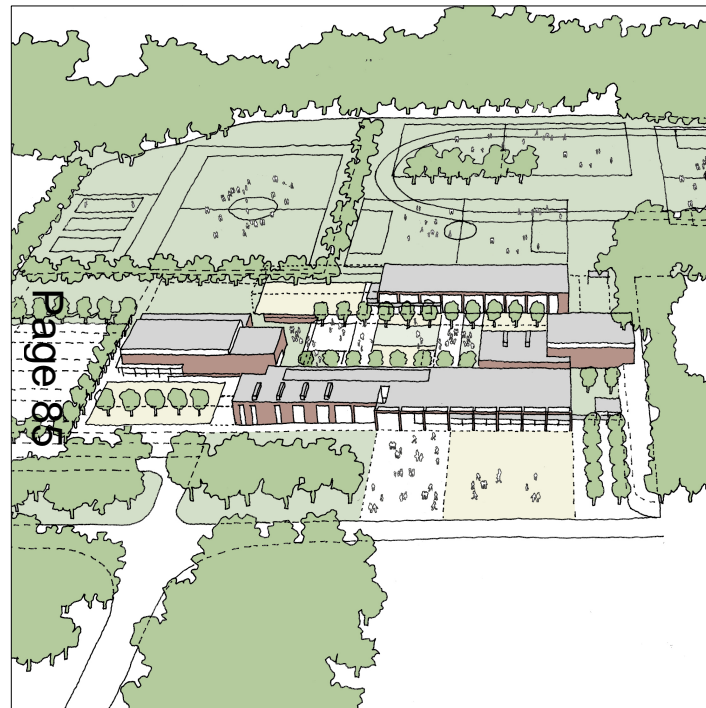
Proposed Site & Building Plans

- Secondary School Boundary
- Other HCC Ownership
- ▶ Pedestrian Access
- ▶ Vehicular Access

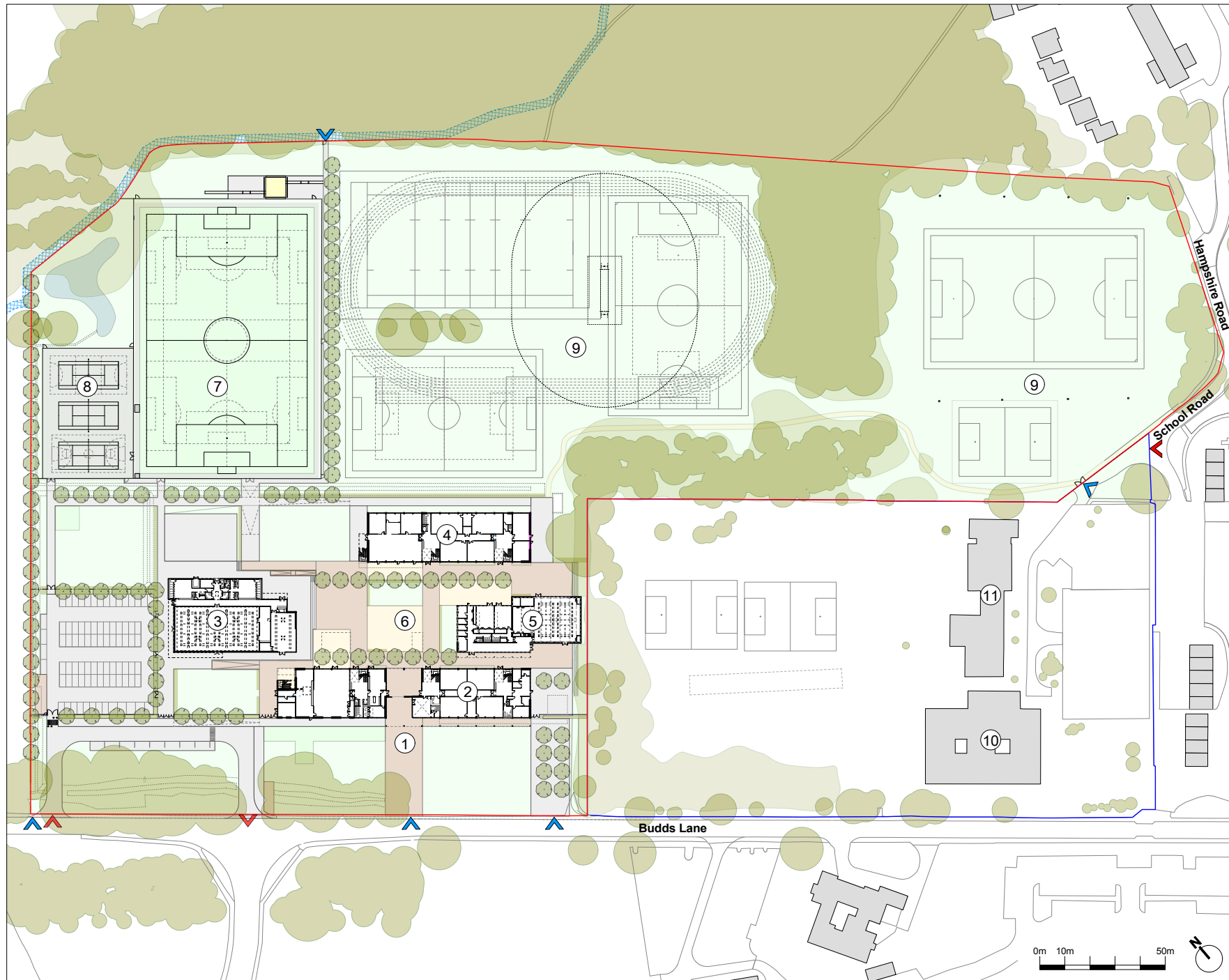
- Site Plan Key:
- 1 Entrance Court
 - 2 Southern Teaching Block
 - 3 Sports Hall And Activity Centre
 - 4 Northern Teaching Block
 - 5 Assembly Hall, Music And Drama
 - 6 Courtyard
 - 7 Synthetic Turf Pitch
 - 8 MUGA
 - 9 Sports Pitches
 - 10 Borden Infant School
 - 11 Borden Junior School



Existing Site Location Plan



Proposed Aerial View Looking North East



Proposed Site Plan



Proposed Budds Lane Perspective

© Crown Copyright and database rights
2017. All rights reserved. HCC
100019180.

Project Appraisal

Not to Scale

P11176 - A100

May 2017

This page is intentionally left blank

HAMPSHIRE COUNTY COUNCIL

Decision Report

Decision Maker:	Executive Member for Education
Date:	19 June 2017
Title:	Pilgrims' Cross Church of England (Voluntary Aided) Primary School Expansion
Report From:	Director of Culture, Communities and Business Services

Contact names: Steve Clow and Bob Wallbridge

Tel: 01962 847858
01962 847894

Email: steve.clow@hants.gov.uk
bob.wallbridge@hants.gov.uk

1. Executive Summary

- 1.1. This report seeks approval to the project proposals for the permanent expansion of Pilgrims' Cross Church of England (Voluntary Aided) Primary School in Andover, at an estimated total cost of £1,456,000.
- 1.2. The purpose of this paper is also to obtain spend and procurement approval for contracting activity associated with the project.
- 1.3. This project is required to provide additional pupil places at the school in response to continuing housing development in the local area.

2. Scope of Work

- 2.1. It is proposed to permanently expand Pilgrims' Cross Church of England (Voluntary Aided) Primary School to increase the schools capacity from a 1.5 Form Entry (FE) to a 2FE (an increase from 315 to 420 pupils). This was anticipated in the design of the original building and a location had been identified.
- 2.2. The proposed building works provide a three classroom expansion, a new group room and hard play area with associated external works.

3. Contextual Information

- 3.1. Pilgrims' Cross Church of England (Voluntary Aided) Primary School is located off Picket Twenty Way in Andover. The school's net capacity is 315 and there are currently 254 pupils on roll.
- 3.2. The school is located within the Picket Twenty housing development which is currently under construction.
- 3.3. Funding of £1,331,000 was approved for the project at the Executive Lead Member for Children's Services Decision Day on 18 January 2017. Approval is being sought in the Capital Programme Report 2017/18 at

Executive Lead Member for Children’s Services Decision Day on 19 June 2017 for an increase the funding by £125,000 to a total of £1,456,000, (The increase of £70,000 and £55,000 will be met from by Test Valley Borough Council and Developer Contributions respectively). The recommendations in this report are subject to that approval and this report outlines the available budget from within which the project must be designed and delivered.

- 3.4. It is proposed that the works be procured through a traditional tender process. It is anticipated that works will commence on site during Autumn 2017 and complete during Summer 2018.
- 3.5. It is proposed that the contractor will access the school site by the existing maintenance access off Picket Twenty Way. The contractor’s compound will be located adjacent to the proposed extension.
- 3.6. No deliveries or movements of vehicles will take place at the start or end of the school day, in order to avoid traffic conflict when pupils are arriving at or departing from the school.
- 3.7. The school site will remain in use during the construction period and local management arrangements will be put in place to manage the health and safety impact to all users.

4. Finance

4.1. Capital Expenditure:

The Capital Expenditure has already been approved; the following tables outline the breakdown of its distribution across the project:

Capital Expenditure	Current Estimate	Capital Programme
	£'000	£'000
Buildings	1,250	1,143
Fees	206	188
	1,456*	1,331 *

* The means by which the difference between the Current Estimate and the Capital Programme allocation is to be met are shown in the table below:

4.2. Sources of Funding:

Financial Provision for Total Scheme	Buildings £'000	Fees £'000	Total Cost £'000
1. From Own Resources			
a) Capital Programme (as above)	1,143	188	1,331
2. From Other Resources			
a) Test Valley Borough Council	60	10	70
a) Developer's Contribution	47	8	55
Total	1,250	206	1,456

a) *Building Cost:*

Net Cost = £2,966 per m²

Gross Cost = £4,199 per m²

b) *Furniture & Equipment:*

Included in the above figures is an allocation of approximately £63,000 for the provision of all loose furniture, fittings, equipment and I.T. (inclusive of fees).

c) *School Balances:*

The school has the following level of balances:

Published revenue balance as at 31 March 2017: n/a

Devolved capital as at 31 March 2017: n/a

4.3 Revenue Issues:

a) Overview of Revenue Implications:

	(a) Employees £'000	(b) Other £'000	(a+b) *Net Current Expenditure £'000	(c) Capital Charges £'000	(a + b + c) Total Net Expenditure £'000
Revenue Implications Additional + / Reductions	0	0	0	80	80

b) Energy Consumption:

The estimated annual energy consumption for the new accommodation will meet that required by current Building Regulations.

5. Risk & Impact Issues

- 5.1. Please see Appendix B for a summary of the risk and impact issues considered in relation to the design of this project.

6. Details of site and existing Infrastructure

- 6.1. The existing school building was built in 2013 and is single storey with a pitched roof. Elevations are a combination of brickwork and timber cladding with aluminium powder coated windows and fully glazed doors.
- 6.2. The existing school provides community facilities at the front of the school building which is fully accessible for all visitors.
- 6.3. The existing mains services and drainage infrastructure at the site will be sufficient to accommodate the project proposals.
- 6.4. No permanent alterations to the main vehicular entrance to the school will be made as a result of the proposals.

7. Scope of the Project

- 7.1. The expansion works at Pilgrims' Cross Church of England (Voluntary Aided) Primary School will include:
- 3 new classrooms
 - a new group room
 - a new hard play area
 - associated external works

8. The Proposed Building

- 8.1. The proposed single storey extension is designed to complement the form, character and scale of the original building which it adjoins.
- 8.2. External walls will be brick with timber cladding under a pitched roof. Windows will be aluminium powder coated with metal framed fully glazed doors to match existing.

9. External Works

- 9.1. The external landscape proposals at Pilgrims' Cross Church of England (Voluntary Aided) Primary School will include:
- external canopy linking Key Stage 1 and Key Stage 2 teaching blocks
 - additional hard play area (funded by Test Valley Borough Council)
 - expansion of the staff car park

- additional cycle storage

10. Car Parking

10.1. The project will provide additional car parking on the school site which will be in line with the Hampshire County Council On-Site School Parking Guidelines (approved by the Executive Lead Member for Children's Services on 25 March 2013). There will be 8 additional car parking spaces provided for staff and visitors. Further fully accessible parking provision is not required.

11. Planning

11.1. A planning application was submitted on 16 March 2017.

12. Building Management

12.1. The existing building management arrangements will remain in place.

13. Professional Resources

Architectural	- Culture, Communities & Business Services
Landscape	- Culture, Communities & Business Services
Mechanical & Electrical	- Culture, Communities & Business Services
Structural Engineering	- Culture, Communities & Business Services
Quantity Surveying	- Culture, Communities & Business Services
Principal Designer	- Culture, Communities & Business Services
Drainage	- Economy, Transport and Environment

14. Consultations

14.1. The following have been consulted during the development of this project and feedback can be seen in overview in Appendix C:

Headteacher
 School Governors
 Diocese of Portsmouth
 Children's Services
 Executive Lead Member for Children's Services
 Local County Councillor
 Local Residents
 Fire Officer
 Access Officer
 Planning Department

15. Recommendations

15.1. That the Executive Member for Education gives approval to the project proposals for the expansion at Pilgrims' Cross Church of England (Voluntary Aided) Primary School in Andover, at an estimated total cost of £1,456,000.

- 15.2. That the Executive Member for Education grants procurement and spend approval for contracting activity associated with the project as outlined in Section 3.3 of this report.
- 15.3. That this approval is subject to the revised total funding amount receiving approval from the Executive Lead Member for Children's Services on 19 June 2017.

CORPORATE OR LEGAL INFORMATION:**Links to the Corporate Strategy**

Hampshire safer and more secure for all:	no
Corporate Improvement plan link number (if appropriate):	
Maximising well-being:	yes
Corporate Improvement plan link number (if appropriate):	
Enhancing our quality of place:	yes
Corporate Improvement plan link number (if appropriate):	

Other Significant Links

Links to previous Member decisions:		
<u>Title</u>	<u>Reference</u>	<u>Date</u>
Pilgrims Cross (CofE) Voluntary Aided Primary School, Andover	5565	25.07.2014
Children's Services Capital Programme 2017/18 to 2019/20	7917	17.01.2017
Children's Services Capital Programme Update 2017/18 to 2019/20	n/a	19.06.2017
Direct links to specific legislation or Government Directives		
<u>Title</u>		<u>Date</u>

Section 100 D - Local Government Act 1972 - background documents

The following documents discuss facts or matters on which this report, or an important part of it, is based and have been relied upon to a material extent in the preparation of this report. (NB: the list excludes published works and any documents which disclose exempt or confidential information as defined in the Act.)

<u>Document</u>	<u>Location</u>
None	

RISK & COMBINED IMPACT ASSESSMENT:

1. Equality Duty

1.1. The County Council has a duty under Section 149 of the Equality Act 2010 ('the Act') to have due regard in the exercise of its functions to the need to:

- Eliminate discrimination, harassment and victimisation and any other conduct prohibited under the Act;
- Advance equality of opportunity between persons who share a relevant protected characteristic (age, disability, gender reassignment, pregnancy and maternity, race, religion or belief, gender and sexual orientation) and those who do not share it;
- Foster good relations between persons who share a relevant protected characteristic and persons who do not share it.

Due regard in this context involves having due regard in particular to:

- a) The need to remove or minimise disadvantages suffered by persons sharing a relevant characteristic connected to that characteristic;
- b) Take steps to meet the needs of persons sharing a relevant protected characteristic different from the needs of persons who do not share it;
- c) Encourage persons sharing a relevant protected characteristic to participate in public life or in any other activity which participation by such persons is disproportionately low.

1.2. Equality Impact Assessment:

- a) The proposed building works are a three classroom expansion, a new group room and games court with associated external works. The extension has been designed to comply with all current legislation and has been reviewed by the access team for Hampshire County Council.
- b) There will be an increase in school spaces, therefore having a positive impact for primary age pupils.

Crime Prevention Issues:

2.1 The County Council has a legal obligation under Section 17 of the Crime and Disorder Act 1998 to consider the impact of all the decisions it makes on the prevention of crime and disorder in the County. The proposals in this report have no impact on the prevention of crime.

3. Fire Risk Assessment

3.1. Sprinkler systems shall be installed in new and refurbished buildings where appropriate, based upon a risk assessment methodology.

- 3.2. With respect to fire safety and property protection, the proposals have been risk assessed in line with the agreed Property Services procedures, and confirmed that the provision of sprinklers is not required in this instance.
- 3.3. The proposals will meet the requirements of the Building Regulations (BB100 Fire Safety in Schools), including enhancements beyond minimum provision, and are consistent with current fire safety legislation, the partnership arrangement with Hampshire Fire and Rescue Services, and are in line with the County Council's policy to manage corporate risk.
- 3.4. The project proposals include the following fire safety and enhanced features:
- Extending of the existing fire alarm system, which is connected to a monitoring station via a communicator.
 - External finishes specified as fire resistant.
 - Reduced fire compartment sizes.
 - Consideration of secure by design principles including specific site security, bin storage away from building, external lighting etc.

4. Health and Safety

- 4.1 Design risk assessments, pre-construction health & safety information and a Health & Safety File will be produced and initiated in accordance with the Construction Design and Management Regulations for the proposed scheme.

5. Climate Change:

- 5.1. The project will incorporate the following sustainability features:

A highly insulated building envelope for the extension including high performance windows, doors and roof lights to reduce energy consumption.

A site waste management plan will be developed to ensure that during construction the principles of minimising waste are maintained.

Energy efficient lighting and heating controls, as each light fitting will be day-light linked with absence detection to ensure the minimum energy is used.

External lighting to provide safe access and emergency escape routes that will be carefully designed to prevent light pollution to avoid nuisance to residential properties.

Natural ventilation to main spaces with night-time cooling strategy.

Provision of good levels of day lighting to all teaching areas to reduce the need for artificial lighting and energy use.

Strategic placement of extended roof canopies above large glazing areas to avoid summer time overheating.

The use of timber from sustainable sources.

FEEDBACK FROM CONSULTEES:**OTHER EXECUTIVE MEMBERS:**

Executive Member & Portfolio	Reason for Consultation	Date Consulted	Response:
Councillor Keith Mans, Executive Lead Member for Children's Services	Portfolio Holder		

OTHER FORMAL CONSULTEES:

Member/ Councillor	Reason for Consultation	Date Consulted	Response:
Councillor Andrew Gibson	Local Member for Test Valley Central Division	26.05.2017	Councillor Gibson is in support of the proposals.



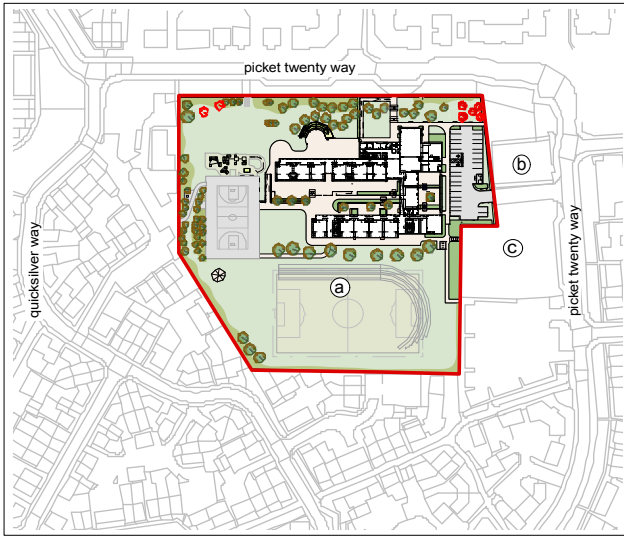
Property Services
**Pilgrims' Cross (CoFE)
 Primary School, Andover**
 Expansion from 1.5FE to 2FE

Proposed Building Plan

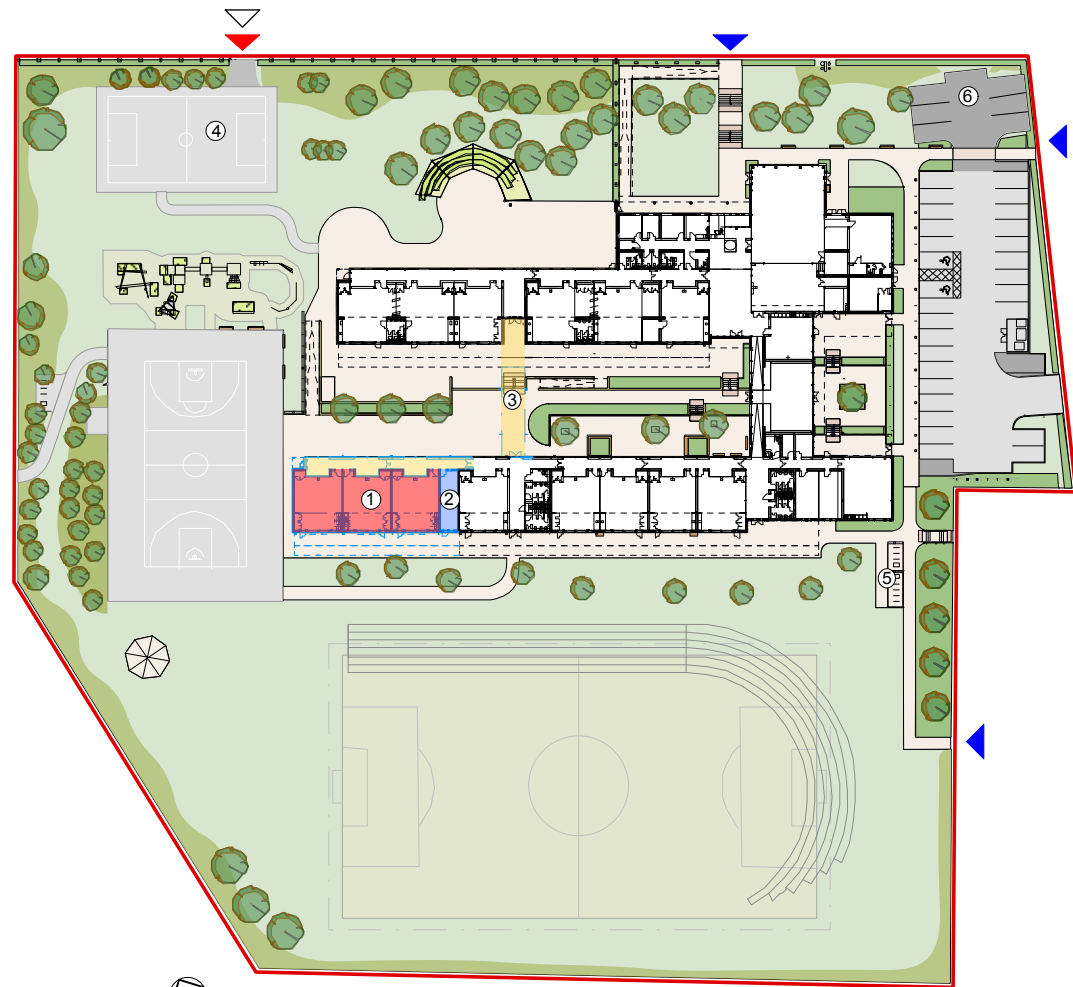
Site Location Plan:
 a Pilgrims' Cross Primary School
 b community centre
 c proposed convenience store

Proposed Site Plan:
 1 3no. proposed junior classrooms
 2 1no. proposed grouproom
 3 proposed external canopy link
 4 proposed additional hard play
 5 proposed additional cycle store
 6 8no. proposed additional parking spaces

- new teaching accommodation
- new non-teaching accommodation
- new circulation
- site boundary
- ▶ pedestrian access
- ▶ vehicular access
- ▶ contractor access



Existing Site Location Plan - Picket Twenty Development

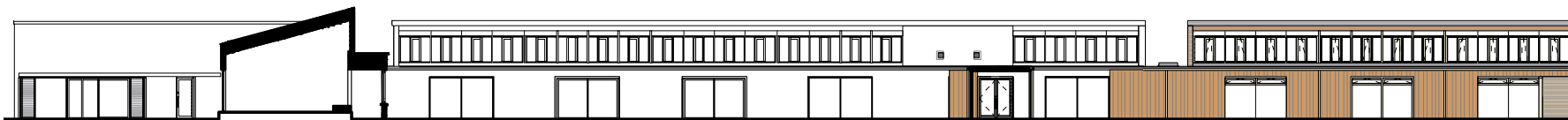


Proposed Site Plan



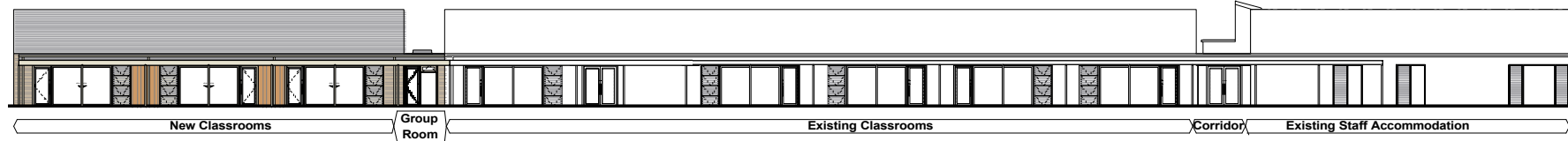
Proposed Aerial View Looking West

Page 97



Existing Staff Accommodation | Existing Library | Existing Classrooms | New Link | New Classrooms

Proposed North East Elevation



New Classrooms | Group Room | Existing Classrooms | Corridor | Existing Staff Accommodation

Proposed South West Elevation

© Crown Copyright and database rights 2017. All rights reserved. HCC 100019180.

Project Appraisal

Not to Scale
 P11119-A-100
 March 2017



This page is intentionally left blank

HAMPSHIRE COUNTY COUNCIL

Decision Report

Decision Maker:	Executive Member for Education
Date:	19 June 2017
Title:	Rownhams St. John's Church of England Primary School Expansion
Report From:	Director of Culture, Communities and Business Services

Contact names: Steve Clow and Bob Wallbridge

Tel: 01962 847858
01962 847894

Email: steve.clow@hants.gov.uk
bob.wallbridge@hants.gov.uk

1. Executive Summary

- 1.1. This report seeks approval to the project proposals for the permanent expansion of Rownhams St. John's Church of England Primary School, at an estimated total cost of £551,000.
- 1.2. The purpose of this paper is also to obtain spend and procurement approval for contracting activity associated with the project.
- 1.3. This project is required to provide additional pupil places at the school arising in response to increased student numbers in the local area.

2. Scope of Work

- 2.1. It is proposed to construct a one classroom extension to Rownhams St. John's Church of England Primary School to increase the schools capacity from 280 places to 315 places (an increase of 35 pupils).
- 2.2. Funding for the project was approved at the Executive Lead Member for Children's Services Decision Day on 18 January 2017 and this report outlines the available budget from within which the project must be designed and delivered.

3. Contextual Information

- 3.1. Rownhams St. John's Church of England Primary School is located off Bakers Drove in Rownhams. The primary school's net capacity is 280 and there are currently 294 pupils on roll.
- 3.2. It is proposed that the works be procured through a competitive tender process. It is anticipated that works will commence on site during Winter 2017 and complete during Summer 2018.
- 3.3. The contractor will access the school site by the main school entrance off Bakers Drove. The contractor's compound will be located adjacent to the proposed extension.

- 3.4. No deliveries or movements of vehicles will take place at the start or end of the school day, in order to avoid traffic conflict when pupils are arriving at or departing from the school.
- 3.5. The school site will remain in use during the construction period and local management arrangements will be put in place to manage the health and safety impact to all users.

4. Finance

4.1. Capital Expenditure:

The Capital Expenditure has already been approved; the following tables outline the breakdown of its distribution across the project:

Capital Expenditure	Current Estimate	Capital Programme
	£'000	£'000
Buildings	473	473
Fees	78	78
	551	551

4.2. Sources of Funding:

Financial Provision for Total Scheme	Buildings	Fees	Total Cost
	£'000	£'000	£'000
1. From Own Resources			
a) Capital Programme (as above)	221	37	258
2. From Other Resources			
a) Developer's Contribution	252	41	293
Total	473	78	551

a) Building Cost:

Net Cost = £2,507 per m²

Gross Cost = £3,817 per m²

b) Furniture & Equipment:

Included in the above figures is an allocation of approximately £12,000 for the provision of all loose furniture, fittings, equipment and I.T. (inclusive of fees).

c) *School Balances:*

The school has the following level of balances:

Published revenue balance as at 31 March 2017: £42,782.15

Devolved capital as at 31 March 2017: £19,015.92

4.4 Revenue Issues:

a) Overview of Revenue Implications:

	(a) Employees £'000	(b) Other £'000	(a+b) *Net Current Expenditure £'000	(c) Capital Charges £'000	(a + b + c) Total Net Expenditure £'000
Revenue Implications Additional + / Reductions	0	0	0	30	30

b) *Energy Consumption:*

The estimated annual energy consumption for the new accommodation will meet that required by current Building Regulations.

5. Risk & Impact Issues

- 5.1. Please see Appendix B for a summary of the risk and impact issues considered in relation to the design of this project.

6. Details of site and existing Infrastructure

- 6.1. The existing school was built in phases between 1975 and 1985 and the school is predominantly single storey construction. The school buildings are brick with pitched and tiled roofs and aluminium windows and doors.
- 6.2. The school consists of 10 classrooms, the most recent of which was built in 2013. A two classroom block was added in 2013 to replace a temporary building at the site.
- 6.3. The main hard play area surrounds the school to the south and west with a playing field to the north.
- 6.4. The existing mains services and drainage infrastructure at the site will be sufficient to accommodate the project proposals.
- 6.5. No permanent alterations to the main vehicular entrance to the school will be made as a result of the proposals.

7. Scope of the Project

7.1. The expansion works at Rownhams St. John's Church of England Primary School will include:

- A single Reception classroom extension
- Alterations to the main school entrance area

8. The Proposed Expansion

8.1. The proposed single storey extension is designed to complement the form, character and scale of the original buildings to which they adjoin. External walls will be of load bearing brick with high performance roof and powder coated aluminium windows and doors.

9. External Works

9.1. No significant external works are planned at the school. Minor works include:

- Alteration to the existing fence in the early years play area
- Making good hard-standing on completion of works

10. Planning

10.1. Planning for this project has been approved under Permitted Development.

11. Building Management

11.1. The existing building management arrangements will remain in place.

12. Professional Resources

Architectural	- Culture, Communities & Business Services
Mechanical & Electrical	- Culture, Communities & Business Services
Structural Engineering	- Culture, Communities & Business Services
Principal Designer	- Culture, Communities & Business Services
Quantity Surveying	- Culture, Communities & Business Services

13. Consultations

13.1. The following have been consulted during the development of this project and feedback can be seen in overview in Appendix C:

Headteacher
School Governors
Children's Services
Executive Lead Member for Children's Services
Local County Councillor
Local Residents
Fire Officer
Access Officer
Planning Department

14. Recommendations

- 14.1. That the Executive Member for Education gives approval to the project proposals for the permanent expansion at Rownhams St. John's Church of England Primary School, at an estimated total cost of £551,000.
- 14.2. That the Executive Member for Education grants procurement and spend approval for contracting activity associated with the project as outlined in Section 3.2 of this report.

CORPORATE OR LEGAL INFORMATION:**Links to the Corporate Strategy**

Hampshire safer and more secure for all:	no
Corporate Improvement plan link number (if appropriate):	
Maximising well-being:	yes
Corporate Improvement plan link number (if appropriate):	
Enhancing our quality of place:	yes
Corporate Improvement plan link number (if appropriate):	

Other Significant Links

Links to previous Member decisions:		
<u>Title</u>	<u>Reference</u>	<u>Date</u>
Children's Services Capital Programme 2017/18 to 2019/20	7917	17.01.2017
Direct links to specific legislation or Government Directives		
<u>Title</u>	<u>Date</u>	

Section 100 D - Local Government Act 1972 - background documents

The following documents discuss facts or matters on which this report, or an important part of it, is based and have been relied upon to a material extent in the preparation of this report. (NB: the list excludes published works and any documents which disclose exempt or confidential information as defined in the Act.)

<u>Document</u>	<u>Location</u>
None	

RISK & COMBINED IMPACT ASSESSMENT:

1. Equality Duty

1.1. The County Council has a duty under Section 149 of the Equality Act 2010 ('the Act') to have due regard in the exercise of its functions to the need to:

- Eliminate discrimination, harassment and victimisation and any other conduct prohibited under the Act;
- Advance equality of opportunity between persons who share a relevant protected characteristic (age, disability, gender reassignment, pregnancy and maternity, race, religion or belief, gender and sexual orientation) and those who do not share it;
- Foster good relations between persons who share a relevant protected characteristic and persons who do not share it.

Due regard in this context involves having due regard in particular to:

- a) The need to remove or minimise disadvantages suffered by persons sharing a relevant characteristic connected to that characteristic;
- b) Take steps to meet the needs of persons sharing a relevant protected characteristic different from the needs of persons who do not share it;
- c) Encourage persons sharing a relevant protected characteristic to participate in public life or in any other activity which participation by such persons is disproportionately low.

1.2. Equality Impact Assessment:

- a) The extension and refurbished areas have been designed to comply with all current legislation have been reviewed by the access team for Hampshire County Council.
- b) The classroom and main entrance will have level access, colour contrast and an acoustic strategy along with fitted furniture design for accessibility.

Crime Prevention Issues:

2.1 The County Council has a legal obligation under Section 17 of the Crime and Disorder Act 1998 to consider the impact of all the decisions it makes on the prevention of crime and disorder in the County. The proposals in this report have no impact on the prevention of crime.

3. Fire Risk Assessment

3.1. Sprinkler systems shall be installed in new and refurbished buildings where appropriate, based upon a risk assessment methodology.

- 3.2. With respect to fire safety and property protection, the proposals have been risk assessed in line with the agreed Property Services procedures, and confirmed that the provision of sprinklers is not required in this instance.
- 3.3. The proposals will meet the requirements of the Building Regulations (BB100 Fire Safety in Schools), including enhancements beyond minimum provision, and are consistent with current fire safety legislation, the partnership arrangement with Hampshire Fire and Rescue Services, and are in line with the County Council's policy to manage corporate risk.
- 3.4. The project proposals include the following fire safety and enhanced features:
- Additional automatic fire protection.
 - External finishes specified as fire resistant.
 - Consideration of secure by design principles including specific site security, bin storage away from building, external lighting etc.

4. Health and Safety

- 4.1 Design risk assessments, pre-construction health & safety information and a Health & Safety File will be produced and initiated in accordance with the Construction Design and Management Regulations for the proposed scheme.

5. Climate Change:

- 5.1. The project will incorporate the following sustainability features:
- A highly insulated building envelope for the extension including high performance windows, doors and roof lights to reduce energy consumption.
 - Acoustic attenuation to allow natural ventilation.
 - Energy efficient lighting and heating controls, as each light fitting will be day-light linked with absence detection to ensure the minimum energy is used.
 - External lighting to provide safe access and emergency escape routes that will be carefully designed to prevent light pollution to avoid nuisance to residential properties.
 - Natural ventilation to main spaces with night-time cooling strategy.
 - Provision of good levels of day lighting to all teaching areas to reduce the need for artificial lighting and energy use.
 - Solar controlled glass will be installed to south facing windows to assist in the control of solar gain.
 - The use of timber from sustainable sources.

FEEDBACK FROM CONSULTEES:**OTHER EXECUTIVE MEMBERS:**

Executive Member & Portfolio	Reason for Consultation	Date Consulted	Response:
Councillor Keith Mans, Executive Lead Member for Children's Services	Portfolio Holder		

OTHER FORMAL CONSULTEES:

Member/ Councillor	Reason for Consultation	Date Consulted	Response:
Councillor Roy Perry	Local Member for Romsey Rural	18.05.2017	Councillor Perry is in support of the proposals.

This page is intentionally left blank

Rownhams St John's (CE) Primary School

Rownhams Expansion to 1.5FE Proposed Site & Building Plans

- Key:
- a Rownham St John Church of England Primary School
 - b Horns Drove Community Pre-School

- | | |
|--------------|---------------------------------------|
| Non-Teaching | 1. Reception & Waiting |
| | 2. General Office |
| | 3. Head Teacher |
| | 4. Staff Room |
| | 5. WCs |
| | 6. Kitchen & Servery |
| | 7. Plant & Non-teaching Stores |
| Teaching | 8. Hall |
| | 9. Classrooms - Reception |
| | 10. Classrooms - Key Stage 1&2 |
| | 11. Learning Resource / Library |
| | 12. Specialist Practical |
| | 13. Studio/ Small Hall/ Music & Drama |
| | 14. Small Group Room (SEN) |
| | 15. ICT Suite |
| External | 16. Car Park |
| | 17. Games Court |
| | 18. Hard Play |
| | 19. Soft Play |
| | 20. Habitat |
| | 21. Pitch |

- General Teaching - New Build
- General Teaching - Refurbishment.
- Non-Teaching - New Build
- Non-Teaching - Refurbishment.
- Circulation

- Site Boundary
- ▶ Pedestrian Access
- ▶ Vehicular Access
- ▶ Contractor Access

© Crown Copyright and database rights 2017. All rights reserved. HCC 100019180.

Project Appraisal

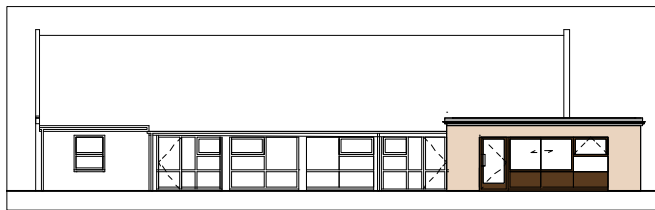
Not to Scale
P11548 - A.100_Rev A
May 2017



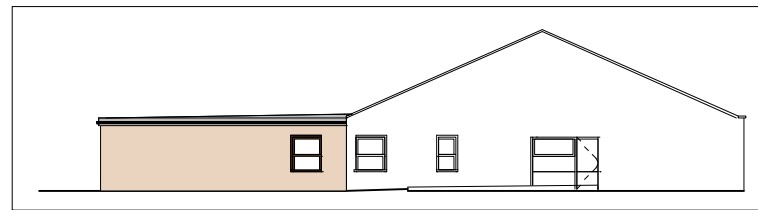
Existing Site Location Plan



Proposed Site Plan



Existing school
Proposed NorthWest Elevation



Proposed classroom
Existing school
Proposed SouthWest Elevation

This page is intentionally left blank